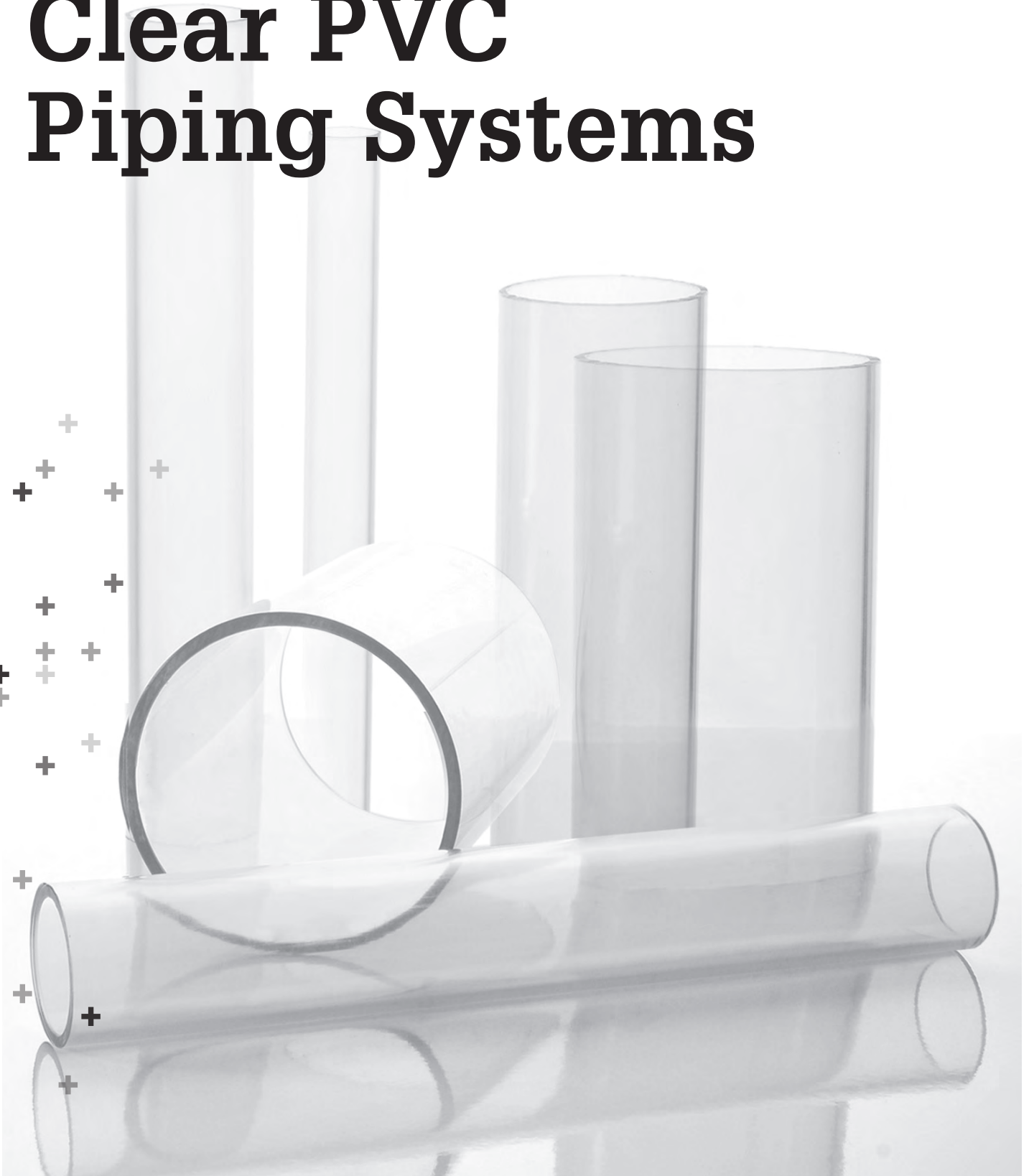


Clear PVC Piping Systems



Specifications and Standards

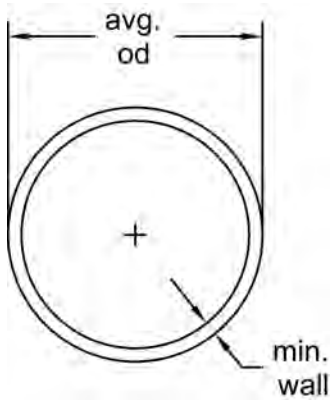
Specifications and Standards

NSF/ANSI Standard 61

FDA Title 21

- ASTM D 1784 : PVC Material, Clear Fittings, Cell Classification 12454
- : PVC Material, Clear Pipe, Cell Classification 16443
- ASTM D 1785 : PVC Schedule 40 & Schedule 80 Pipe Dimensions
- ASTM D 2672 : PVC Schedule 40 Tapered Sockets for Bell End Pipe
- ASTM D 2466 : PVC Schedule 40 Socket & Threaded Fittings
- ASTM D 2467 : PVC Schedule 80 Socket & Threaded Fittings
- ANSI B1.20.1 : PVC Schedule 40 NPT Threads

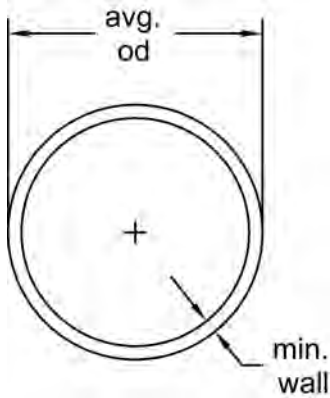
Harvel® Clear PVC Pressure Pipe



Schedule 40 Clear PVC - 10 ft lengths

- Max Water Pressure at 73°F (22.7°C) with solvent-cemented joints
- Belled-end pipe available upon request
- Must be purchased in full box qty
- 20ft Plain end length available upon request

| Size (inch) | P/L | Part No. | Box Qty (ft) | Average O.D. (inch) | min. wall (inch) | Wt/Ft (lbs/ft) | Max Water Pressure (psi) |
|----------------|-----|-----------------|-----------------|------------------------|---------------------|-------------------|-----------------------------|
| ¼ | H05 | *H0400025PL1000 | 100 | 0.540 | 0.088 | 0.081 | 390 |
| ⅜ | H05 | *H0400038PL1000 | 100 | 0.675 | 0.091 | 0.109 | 310 |
| ½ | H05 | *H0400050PL1000 | 350 | 0.840 | 0.109 | 0.161 | 300 |
| ¾ | H05 | *H0400075PL1000 | 250 | 1.050 | 0.113 | 0.214 | 240 |
| 1 | H05 | *H0400100PL1000 | 250 | 1.315 | 0.133 | 0.315 | 220 |
| 1 ¼ | H05 | *H0400125PL1000 | 200 | 1.660 | 0.140 | 0.426 | 180 |
| 1 ½ | H05 | *H0400150PL1000 | 160 | 1.900 | 0.145 | 0.509 | 170 |
| 2 | H05 | *H0400200PL1000 | 120 | 2.375 | 0.154 | 0.682 | 140 |
| 2 ½ | H05 | *H0400250PL1000 | 80 | 2.875 | 0.203 | 1.076 | 150 |
| 3 | H05 | *H0400300PL1000 | 60 | 3.500 | 0.216 | 1.409 | 130 |
| 3 ½ | H05 | *H0400350PL1000 | 40 | 4.000 | 0.226 | 1.697 | 120 |
| 4 | H05 | *H0400400PL1000 | 40 | 4.500 | 0.237 | 2.006 | 110 |
| 5 | H05 | *H0400500PL1000 | 10 | 5.563 | 0.258 | 2.726 | 95 |
| 6 | H05 | *H0400600PL1000 | 10 | 6.625 | 0.280 | 3.535 | 90 |
| 6 ½ | H05 | *H0400613PL1000 | 10 | 6.625 | 0.130 | 1.770 | 45 |
| 8 | H05 | *H0400800PL1000 | 10 | 8.625 | 0.322 | 5.305 | 80 |
| 10 | H05 | *H0401000PL1000 | 10 | 10.750 | 0.365 | 7.532 | 70 |
| 12 | H05 | *H0401200PL1000 | 10 | 12.750 | 0.406 | 9.949 | 70 |

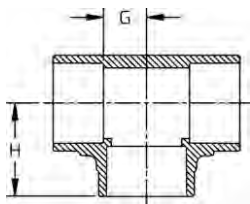


Schedule 80 Clear PVC - 10 ft lengths

- Max Water Pressure at 73°F (22.7°C) with solvent-cemented joints
- Belled-end pipe available upon request
- Must be purchased in full box qty
- 20ft Plain end length available upon request

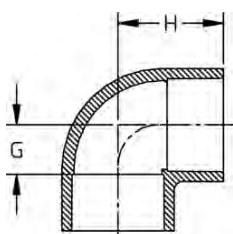
| Size (inch) | P/L | Part No. | Box Qty (ft) | Average O.D. (inch) | min. wall (inch) | Wt/Ft (lbs/ft) | Max Water Pressure (psi) |
|----------------|-----|-----------------|-----------------|------------------------|---------------------|-------------------|-----------------------------|
| ¼ | H56 | *H0800025PL1000 | 100 | 0.540 | 0.119 | 0.100 | 570 |
| ⅜ | H56 | *H0800038PL1000 | 100 | 0.675 | 0.126 | 0.138 | 460 |
| ½ | H56 | *H0800050PL1000 | 50 | 0.840 | 0.147 | 0.202 | 420 |
| ¾ | H56 | *H0800075PL1000 | 50 | 1.050 | 0.154 | 0.273 | 340 |
| 1 | H56 | *H0800100PL1000 | 20 | 1.315 | 0.179 | 0.402 | 320 |
| 1 ¼ | H56 | *H0800125PL1000 | 10 | 1.660 | 0.191 | 0.554 | 260 |
| 1 ½ | H56 | *H0800150PL1000 | 10 | 1.900 | 0.200 | 0.673 | 240 |
| 2 | H56 | *H0800200PL1000 | 10 | 2.375 | 0.218 | 0.932 | 200 |
| 2 ½ | H56 | *H0800250PL1000 | 10 | 2.875 | 0.276 | 1.419 | 210 |
| 3 | H56 | *H0800300PL1000 | 10 | 3.500 | 0.300 | 1.903 | 190 |
| 4 | H56 | *H0800400PL1000 | 10 | 4.500 | 0.337 | 2.782 | 160 |
| 6 | H56 | *H0800600PL1000 | 10 | 6.625 | 0.432 | 5.313 | 140 |

Clear PVC Fittings



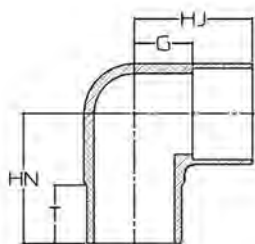
Tee (S x S x S)

| Size (inch) | P/L | Part No. | Pack Qty | H (inch) | G (inch) |
|----------------|-----|------------|----------|-------------|-------------|
| ¼ | H01 | *H401002LS | 10 | 0.97 | 0.34 |
| ⅜ | H01 | *H401003LS | 10 | 1.13 | 0.38 |
| ½ | H01 | *H401005LS | 25 | 1.25 | 0.50 |
| ¾ | H01 | *H401007LS | 25 | 1.56 | 0.56 |
| 1 | H01 | *H401010LS | 25 | 1.75 | 0.69 |
| 1 ¼ | H01 | *H401012LS | 10 | 2.25 | 0.88 |
| 1 ½ | H01 | *H401015LS | 10 | 2.34 | 1.09 |
| 2 | H01 | *H401020LS | 10 | 2.75 | 1.38 |
| 2 ½ | H01 | *H401025LS | 5 | 3.41 | 1.66 |
| 3 | H01 | *H401030LS | 5 | 3.84 | 1.94 |
| 4 | H01 | *H401040LS | 5 | 4.44 | 2.41 |
| 6 | H01 | *H401060LS | 2 | 6.66 | 3.63 |
| 8 | H01 | *H401080LS | 1 | 8.53 | 4.50 |



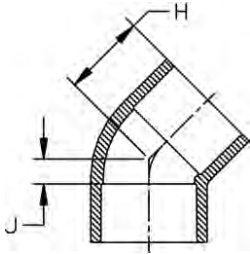
90° Ell (S x S)

| Size (inch) | P/L | Part No. | Pack Qty | H (inch) | G (inch) |
|----------------|-----|------------|----------|-------------|-------------|
| ¼ | H01 | *H406002LS | 10 | 1.09 | 0.41 |
| ⅜ | H01 | *H406003LS | 10 | 1.13 | 0.38 |
| ½ | H01 | *H406005LS | 25 | 1.25 | 0.50 |
| ¾ | H01 | *H406007LS | 25 | 1.50 | 0.56 |
| 1 | H01 | *H406010LS | 25 | 1.81 | 0.69 |
| 1 ¼ | H01 | *H406012LS | 10 | 2.16 | 0.97 |
| 1 ½ | H01 | *H406015LS | 10 | 2.34 | 1.06 |
| 2 | H01 | *H406020LS | 10 | 2.69 | 1.31 |
| 2 ½ | H01 | *H406025LS | 5 | 3.25 | 1.50 |
| 3 | H01 | *H406030LS | 5 | 3.72 | 1.84 |
| 4 | H01 | *H406040LS | 5 | 4.44 | 2.41 |
| 6 | H01 | *H406060LS | 2 | 6.56 | 3.53 |
| 8 | H01 | *H406080LS | 1 | 8.47 | 4.44 |



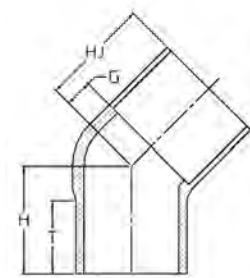
90° Street Ell (SPG x S)

| Size (inch) | P/L | Part No. | Pack Qty | HJ (inch) | HN (inch) | G (inch) | T (inch) |
|----------------|-----|------------|----------|--------------|--------------|-------------|-------------|
| ½ | H01 | *H409005LS | 25 | 1.16 | 1.44 | 0.41 | 0.75 |
| ¾ | H01 | *H409007LS | 25 | 1.53 | 1.84 | 0.53 | 1.00 |
| 1 | H01 | *H409010LS | 25 | 1.81 | 2.09 | 0.69 | 1.13 |
| 1 ¼ | H01 | *H409012LS | 10 | 2.06 | 2.47 | 0.81 | 1.28 |
| 1 ½ | H01 | *H409015LS | 10 | 2.38 | 2.63 | 1.06 | 1.28 |
| 2 | H01 | *H409020LS | 10 | 2.63 | 3.00 | 1.25 | 1.41 |
| 2 ½ | H01 | *H409025LS | 5 | 3.38 | 3.72 | 1.53 | 2.25 |



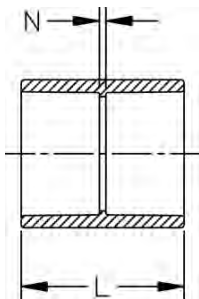
45° Ell (S x S)

| Size (inch) | P/L | Part No. | Pack Qty | H (inch) | J (inch) |
|----------------|-----|------------|----------|-------------|-------------|
| ¼ | H01 | *H417002LS | 10 | 1.09 | 0.41 |
| ⅜ | H01 | *H417003LS | 10 | 1.13 | 0.38 |
| ½ | H01 | *H417005LS | 25 | 1.00 | 0.25 |
| ¾ | H01 | *H417007LS | 25 | 1.38 | 0.44 |
| 1 | H01 | *H417010LS | 25 | 1.50 | 0.47 |
| 1 ¼ | H01 | *H417012LS | 10 | 1.78 | 0.53 |
| 1 ½ | H01 | *H417015LS | 10 | 1.91 | 0.59 |
| 2 | H01 | *H417020LS | 10 | 2.06 | 0.69 |
| 2 ½ | H01 | *H417025LS | 5 | 2.44 | 0.69 |
| 3 | H01 | *H417030LS | 5 | 2.84 | 0.84 |
| 4 | H01 | *H417040LS | 5 | 3.09 | 1.09 |
| 6 | H01 | *H417060LS | 2 | 4.75 | 1.72 |
| 8 | H01 | *H417080LS | 1 | 6.00 | 2.00 |



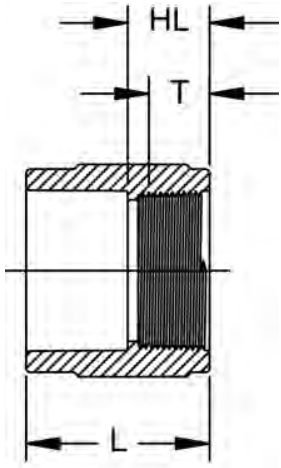
45° Street Ell (SPG x S)

| Size (inch) | P/L | Part No. | Pack Qty | HJ (inch) | H (inch) | G (inch) | T (inch) |
|----------------|-----|------------|----------|--------------|-------------|-------------|-------------|
| ½ | H01 | *H427005LS | 25 | 1.28 | 1.28 | 0.41 | 0.94 |
| ¾ | H01 | *H427007LS | 25 | 1.53 | 1.50 | 0.53 | 1.06 |
| 1 | H01 | *H427010LS | 25 | 1.66 | 1.59 | 0.53 | 1.19 |
| 1 ¼ | H01 | *H427012LS | 10 | 1.91 | 1.78 | 0.66 | 1.28 |
| 1 ½ | H01 | *H427015LS | 10 | 2.09 | 2.03 | 0.72 | 1.44 |
| 2 | H01 | *H427020LS | 10 | 2.00 | 2.00 | 0.47 | 1.38 |
| 2 ½ | H01 | *H427025LS | 5 | 2.63 | 2.63 | 0.88 | 1.88 |
| 3 | H01 | *H427030LS | 5 | 3.03 | 2.97 | 1.22 | 1.97 |
| 4 | H01 | *H427040LS | 5 | 3.81 | 3.66 | 1.56 | 2.38 |



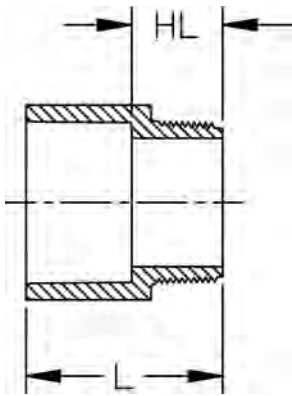
Coupling (S x S)

| Size (inch) | P/L | Part No. | Pack Qty | L (inch) | N (inch) |
|----------------|-----|------------|----------|-------------|-------------|
| ¼ | H01 | *H429002LS | 10 | 1.37 | 0.06 |
| ⅜ | H01 | *H429003LS | 10 | 2.63 | 0.13 |
| ½ | H01 | *H429005LS | 25 | 1.59 | 0.13 |
| ¾ | H01 | *H429007LS | 25 | 2.09 | 0.13 |
| 1 | H01 | *H429010LS | 25 | 2.13 | 0.13 |
| 1 ¼ | H01 | *H429012LS | 10 | 2.34 | 0.13 |
| 2 | H01 | *H429020LS | 10 | 2.88 | 0.19 |
| 2 ½ | H01 | *H429025LS | 5 | 3.75 | 0.19 |
| 3 | H01 | *H429030LS | 5 | 3.97 | 0.19 |
| 4 | H01 | *H429040LS | 5 | 4.25 | 0.25 |
| 6 | H01 | *H429060LS | 2 | 6.31 | 0.25 |
| 8 | H01 | *H429080LS | 2 | 8.34 | 0.25 |



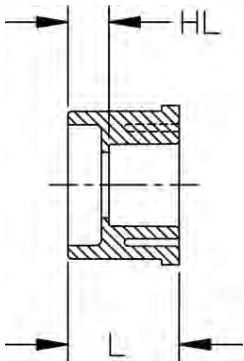
Female Adapter (S x FPT)

| Size (inch) | P/L | Part No. | Pack Qty | HL (inch) | L (inch) | T (inch) |
|----------------|-----|--------------|----------|--------------|-------------|-------------|
| ¼ | H01 | *H435002SRLS | 10 | 0.75 | 1.31 | 0.40 |
| ¾ | H01 | *H435003SRLS | 10 | 0.75 | 1.44 | 0.41 |
| ½ | H01 | *H435005SRLS | 25 | 0.91 | 1.75 | 0.53 |
| ¾ | H01 | *H435007SRLS | 25 | 0.95 | 1.88 | 0.55 |
| 1 | H01 | *H435010SRLS | 25 | 1.11 | 2.13 | 0.68 |
| 1 ¼ | H01 | *H435012SRLS | 10 | 1.16 | 2.31 | 0.71 |
| 1 ½ | H01 | *H435015SRLS | 10 | 1.19 | 2.44 | 0.72 |
| 2 | H01 | *H435020SRLS | 10 | 1.23 | 2.69 | 0.76 |
| 2 ½ | H01 | *H435025SRLS | 5 | 1.75 | 3.25 | 1.14 |
| 3 | H01 | *H435030SRLS | 5 | 1.91 | 3.50 | 1.20 |
| 4 | H01 | *H435040SRLS | 5 | 2.02 | 3.94 | 1.30 |



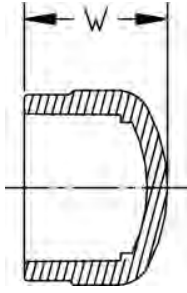
Male Adapter (S x MPT)

| Size (inch) | P/L | Part No. | Pack Qty | HL (inch) | L (inch) |
|----------------|-----|------------|----------|--------------|-------------|
| ½ | H01 | *H436005LS | 25 | 0.16 | 1.53 |
| ¾ | H01 | *H436007LS | 25 | 0.16 | 1.72 |
| 1 | H01 | *H436010LS | 25 | 0.22 | 2.06 |
| 1 ¼ | H01 | *H436012LS | 10 | 0.19 | 2.44 |
| 1 ½ | H01 | *H436015LS | 10 | 0.19 | 2.53 |
| 2 | H01 | *H436020LS | 10 | 0.22 | 2.66 |
| 2 ½ | H01 | *H436025LS | 5 | 0.28 | 3.81 |
| 3 | H01 | *H436030LS | 5 | 0.28 | 3.91 |
| 4 | H01 | *H436040LS | 5 | 0.28 | 4.03 |



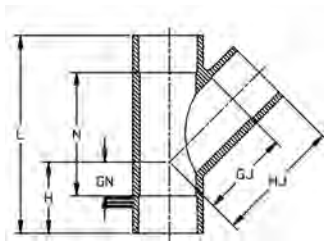
Flush Style Reducer Bushing (SPG x S)

| Size (inch) | P/L | Part No. | Pack Qty | HL (inch) | L (inch) |
|----------------|-----|------------|----------|--------------|-------------|
| ¾ x ½ | H01 | *H437101LS | 25 | 0.28 | 1.06 |
| 1 x ¾ | H01 | *H437131LS | 25 | 0.31 | 1.25 |
| 1 ¼ x 1 | H01 | *H437168LS | 25 | 0.44 | 1.50 |
| 1 ½ x 1 | H01 | *H437211LS | 25 | 0.50 | 1.53 |
| 1 ½ x 1 ¼ | H01 | *H437212LS | 25 | 0.28 | 1.53 |
| 2 x 1 ½ | H01 | *H437251LS | 10 | 0.25 | 1.56 |
| 2 ½ x 2 | H01 | *H437292LS | 5 | 0.69 | 2.06 |
| 3 x 2 | H01 | *H437338LS | 5 | 0.56 | 2.22 |
| 3 x 2 ½ | H01 | *H437339LS | 5 | 0.44 | 2.22 |
| 4 x 3 | H01 | *H437422LS | 5 | 0.47 | 2.34 |
| 6 x 4 | H01 | *H437532LS | 2 | 1.50 | 3.56 |
| 8 x 6 | H01 | *H437585LS | 2 | 1.38 | 4.41 |



Cap (S)

| Size (inch) | P/L | Part No. | Pack Qty | W (inch) |
|----------------|-----|------------|----------|-------------|
| ¼ | H01 | *H447002LS | 10 | 3.63 |
| ¾ | H01 | *H447003LS | 10 | 1.00 |
| ½ | H01 | *H447005LS | 25 | 1.03 |
| ¾ | H01 | *H447007LS | 25 | 1.31 |
| 1 | H01 | *H447010LS | 25 | 1.56 |
| 1 ¼ | H01 | *H447012LS | 10 | 1.75 |
| 1 ½ | H01 | *H447015LS | 10 | 1.91 |
| 2 | H01 | *H447020LS | 10 | 2.03 |
| 2 ½ | H01 | *H447025LS | 5 | 2.56 |
| 3 | H01 | *H447030LS | 5 | 2.91 |
| 4 | H01 | *H447040LS | 5 | 3.13 |
| 6 | H01 | *H447060LS | 2 | 5.00 |
| 8 | H01 | *H447080LS | 2 | 6.38 |



45° Wye (S x S x S)

| Size (inch) | P/L | Part No. | Pack Qty | GJ (inch) | GN (inch) | H (inch) | HJ (inch) | L (inch) | N (inch) |
|----------------|-----|------------|----------|--------------|--------------|-------------|--------------|-------------|-------------|
| 1 ½ | H01 | *H475015LS | 20 | 2.59 | 0.50 | 1.88 | 3.97 | 5.81 | 3.06 |
| 2 | H01 | *H475020LS | 10 | 3.22 | 0.59 | 2.13 | 4.75 | 6.88 | 3.81 |
| 3 | H01 | *H475030LS | 4 | 4.56 | 0.88 | 2.78 | 6.47 | 8.75 | 4.94 |
| 4 | H01 | *H475040LS | 4 | 5.72 | 1.22 | 3.50 | 7.97 | 10.75 | 6.25 |
| 6 | H01 | *H475060LS | 2 | 8.50 | 1.31 | 4.31 | 11.66 | 15.38 | 9.38 |
| 6 x 4 | H01 | *H475532LS | 2 | 6.56 | 0.97 | 3.94 | 12.66 | 12.66 | 8.09 |