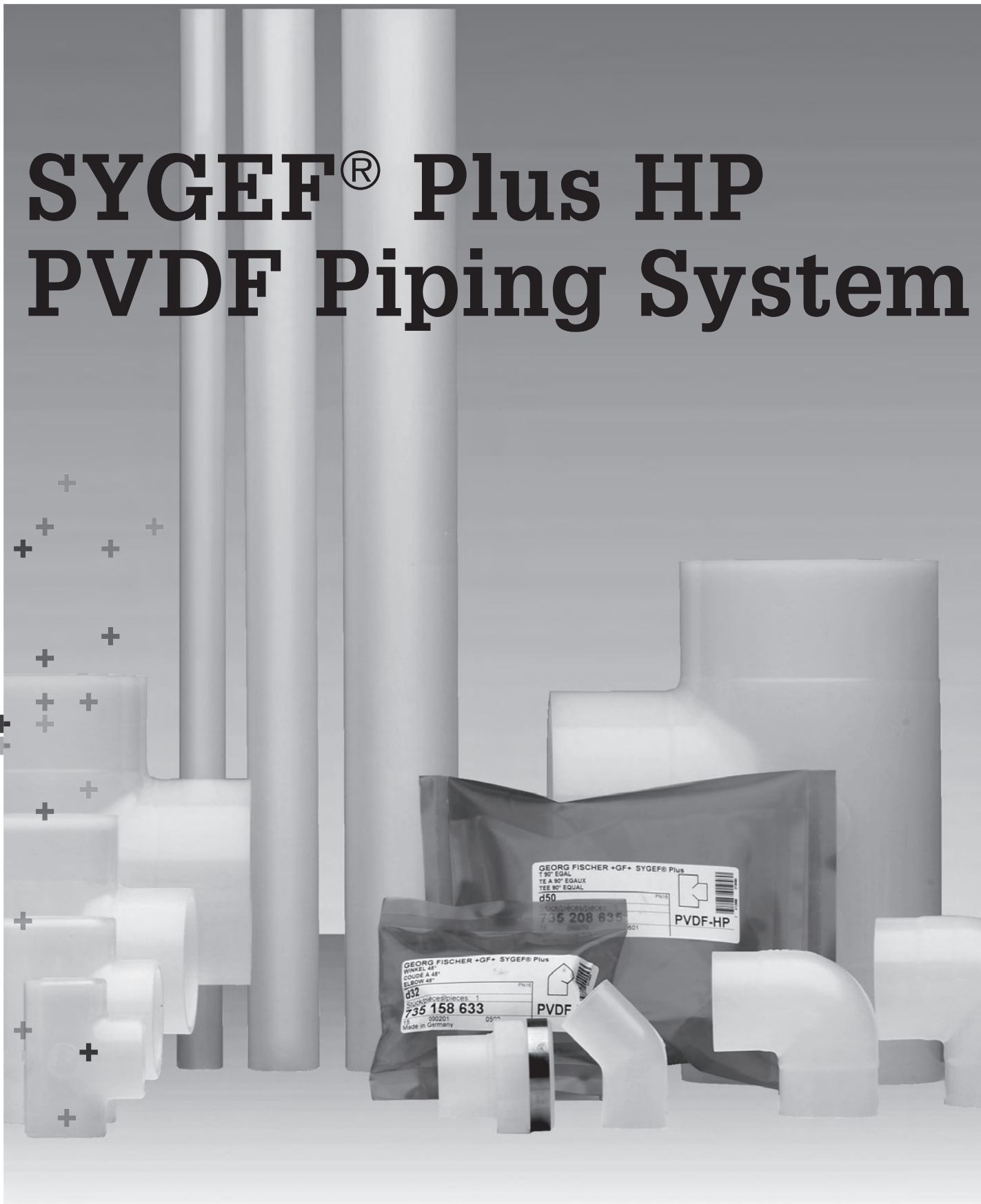


# SYGEF<sup>®</sup> Plus HP PVDF Piping System



GEORG FISCHER +GF+ SYGEF<sup>®</sup> Plus  
WINKEL 45°  
COUDE A 45°  
ELBOW 45°  
032  
Stück/Pieces/Decks: 1  
735 158 633  
000201 05mm  
Made in Germany

GEORG FISCHER +GF+ SYGEF<sup>®</sup> Plus  
T A 90° EGAUX  
TEE 90° EQUAL  
d50  
735 208 635  
PVDF-HP

# SYGEF® Plus HP PVDF – Đặc điểm kỹ thuật sản phẩm

Vật liệu	High Purity Polyvinylidene Fluoride (PVDF HP) Độ tinh khiết cao
Màu sắc	Nguyên liệu nguyên chất, mờ
Tỷ trọng	~1.78 g/cm <sup>3</sup> (ISO 1183 / ASTM D 792)
Sức căng bề mặt	30–35 mJ/m <sup>2</sup>
Hệ số mở rộng tuyến tính	0.12–0.18 mm/mK (DIN 53752)
E-module (độ bền kéo)	2100 N/mm <sup>2</sup> (EN ISO 527/ASTM D 790)
Dẫn nhiệt	0.19 W/mK (DIN 52612)
Điện trở bề mặt	5 × 10 <sup>-4</sup> Ωcm (IEC 60093)
Kích thước	d 20 (½")–d 450 (18") theo tiêu chuẩn ISO 10931
Đánh giá áp suất	Ống/phụ kiện: PN 16/232 PSI (d 20–d 225), PN 10/150 PSI (d 90–d 450) Van: đặc điểm kỹ thuật riêng biệt
Đánh giá nhiệt độ	từ -20 °C đến 140 °C (-4 °F–284 °F)
Điều kiện sản xuất <sup>(1)</sup>	Phụ kiện/van màng: Đúc Ống: Đùn Sản xuất trong điều kiện phòng sạch theo tiêu chuẩn ISO 14644-1 Class 7 (U.S. Fed. Std. 209E Class 10'000). Việc lắp ráp, kiểm tra chất lượng và làm sạch sau đó được thực hiện bằng cách sử dụng nước tinh khiết 18 MΩ trong phòng sạch ISO 14644-1 Class 5-6 (Hoa Kỳ Fed. Std. 209E Class 100-1000).
Hoàn thiện bề mặt	Bề mặt bên trong ≤ d 225 Ra ≤ 0.2 μm (9 μin) / > d 225 Ra ≤ 0.3 μm (12 μin) cho các thành phần đúc và ép đùn
Đánh dấu	Tất cả các thành phần được dập nổi với một nhận dạng vĩnh viễn trong quá trình sản xuất để đảm bảo truy xuất nguồn gốc đầy đủ. Số Lô Vật liệu Kích thước Mức áp suất
Phương pháp thử và kiểm tra (ISO 10931)	Bao gồm Kiểm tra trực quan Bề mặt hoàn thiện Dung sai kích thước Kiểm tra áp suất Chu kỳ rò rỉ SEMI F 40 / F 57
Phê duyệt	ASME BPE FDA CFR 21 177.2510 USP 25 class VI (sinh lý không độc) SEMI F57
Công nghệ nổi	BCF® Plus, hợp nhất không tạo hạt size d 20 (½")–d 110 (4") IR® Plus, hợp nhất hồng ngoại (DVS 2207-6), size d 20 (½")–d 450 (18")
Tài liệu <sup>(1)</sup>	Giấy chứng nhận phù hợp với FDA, USP EN 10204 2.2 EN 10204 3.1b
Đóng gói <sup>(2)</sup>	Pipes capped and each component double bagged in an specified inner bag and an outer bag under clean room ISO 14644-1 Class 6 (U.S. Fed. Std. 209E Class 1000) conditions.
Ghi nhãn	Thương hiệu Mô tả Sản phẩm Mã số Vật liệu Kích thước Nhãn CE
Ứng dụng chính	Sử dụng bao gồm phân phối nước siêu tinh khiết trong ngành công nghiệp bán dẫn / điện tử, nước cấp được phẩm (WFI / PW) và nước khử ozone phân tích cho các yêu cầu độ tinh khiết cao nhất. Một loạt các phương pháp vệ sinh phù hợp như Ozone, nước nóng hoặc hơi nước.

<sup>(1)</sup> Theo yêu cầu

<sup>(2)</sup> Không bao gồm các van điều chỉnh áp suất. Sản phẩm được làm sạch và đóng gói hai lần sau khi sản xuất đảm bảo quá trình kiểm soát và tiêu chuẩn sản phẩm cao nhất.

**Table of contents****Page**

Pipe

174



IR Plus/BCF Plus Fusion Fittings

175



Manual Valves

203

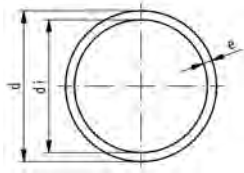


Rotameters

210

# Pipe

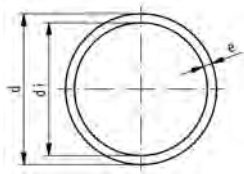
A



## Pipe, PN 16, PVDF-HP

d (mm)	FM	Part No.	lbs/meter	e (mm)	di (mm)
20	BCF, IR	* 175 481 203	0.463	1.9	16.2
25	BCF, IR	* 175 481 204	0.593	1.9	21.2
32	BCF, IR	* 175 481 205	0.959	2.4	27.2
40	BCF, IR	* 175 481 206	1.241	2.4	35.2
50	BCF, IR	* 175 481 207	1.874	3.0	44.0
63	BCF, IR	* 175 481 208	2.403	3.0	57.0
75	BCF, IR	* 175 481 209	3.417	3.6	67.8
90	BCF, IR	* 175 481 210	4.916	4.3	81.4
110	BCF, IR	* 175 481 211	7.341	5.3	99.4
160	IR	* 175 481 214		7.7	144.6
200	IR	* 175 481 216		9.6	180.8
225	IR	* 175 481 217		10.8	202.6
250	IR	* 175 481 218		11.9	226.2
315	IR	* 175 481 220		15.0	285.0

A



## Pipe, PN 10, PVDF-HP

d (mm)	FM	Part No.	lbs/meter	e (mm)	di (mm)
90	BCF, IR	* 175 481 665	3.263	2.8	84.4
110	BCF, IR	* 175 481 666	4.850	3.4	103.2
160		* 175 481 668	10.009	4.9	150.2
200		* 175 481 669	15.851	6.2	187.6
225		* 175 481 670	19.731	6.9	211.2
250		* 175 481 671	24.471	7.7	234.6
315		* 175 481 674	38.801	9.7	295.6
355		* 175 481 657	46.208	10.9	333.2
400		* 175 481 658	58.753	12.3	375.4
450		* 175 481 659	74.163	13.8	422.4

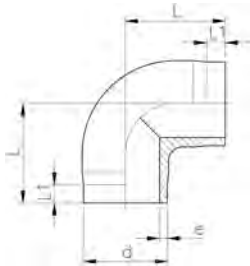
# IR Plus/BCF Plus Fusion Fittings

A

## 90° Elbow Short Radius, PN 16, PVDF-HP



FM	d	Part No.	weight	e	L	L1
	(mm)		(lb)	(mm)	(mm)	(mm)
BCF, IR	20	<b>735 108 631</b>	0.037	1.9	38	25
BCF, IR	25	<b>735 108 632</b>	0.051	1.9	42	26
BCF, IR	32	<b>735 108 633</b>	0.088	2.4	46	26
BCF, IR	40	<b>^ 735 108 634</b>	0.132	2.4	51	28
BCF, IR	50	<b>735 108 635</b>	0.231	3.0	58	28
BCF, IR	63	<b>735 108 636</b>	0.437	3.0	66	28

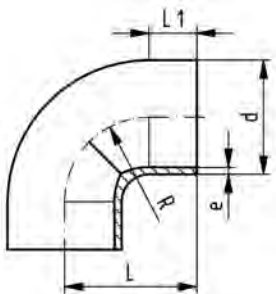


A

## 90° Elbow Sweep Radius, PN 16, PVDF-HP

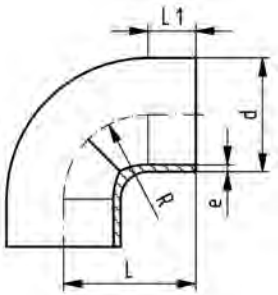


d	FM	Part No.	weight	e	L	L1	R
(mm)			(lb)	(mm)	(mm)	(mm)	(mm)
75	BCF, IR	<b>^ 735 018 737</b>	0.536	3.6	75	23	62
90	BCF, IR	<b>^ 735 018 738</b>	0.933	4.3	90	23	77
110	BCF, IR	<b>^ 735 018 739</b>	1.554	5.3	110	23	98
160	IR	<b>735 018 742</b>	4.524	7.7	160	33	141
200	IR	<b>735 018 744</b>	8.488	9.6	200	33	181
225	IR	<b>735 018 745</b>	11.612	10.8	220	33	200
250	IR	<b>^ 735 018 746</b>	14.409	11.9	254	48	232
315	IR	<b>^ 735 018 748</b>	28.728	15.0	321	48	297



A

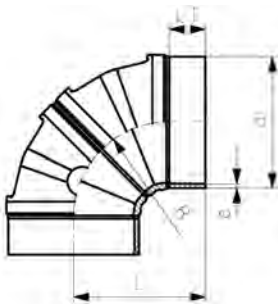
**90° Elbow Sweep Radius, PN 10, PVDF-HP**



d (mm)	FM	Part No.	weight (lb)	e (mm)	L (mm)	L1 (mm)	R (mm)
90	BCF, IR	<b>^ 735 018 538</b>	0.728	2.8	90	23	77
110	BCF, IR	<b>^ 735 018 539</b>	1.268	3.4	110	23	98
160	IR	<b>735 018 542</b>	3.395	4.9	160	33	141
200	IR	<b>735 018 544</b>	4.449	6.2	200	33	181
225	IR	<b>* 735 018 545</b>	8.713	6.9	220	33	200
250	IR	<b>^ 735 018 546</b>	9.489	7.7	254	48	232
315	IR	<b>^ 735 018 548</b>	19.912	9.7	321	48	297

A

**90° Elbow Sweep Radius, PN 10, PVDF-HP**



d (mm)	FM	Part No.	weight (lb)	e (mm)	L (mm)	L1 (mm)	R (mm)
355	IR	<b>^ 735 018 549</b>	39.842	10.9	359	100	257
400	IR	<b>^ 735 018 550</b>	52.878	12.3	392	100	290
450	IR	<b>^ 735 018 551</b>	70.652	13.8	430	100	328

A

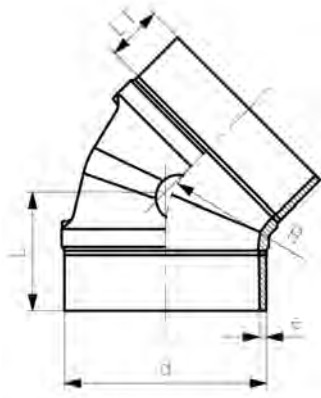
**45° Elbow, PN 16, PVDF-HP**



BCF, IR	FM (mm)	d (mm)	Part No.	weight (lb)	e (mm)	L (mm)	L1 (mm)
	20		<b>735 158 631</b>	0.031	1.9	32	25
	25		<b>735 158 632</b>	0.042	1.9	34	26
	32		<b>735 158 633</b>	0.073	2.4	36	26
	40		<b>^ 735 158 634</b>	0.093	2.4	39	28
	50		<b>735 158 635</b>	0.185	3.0	42	30
	63		<b>735 158 636</b>	0.267	3.0	47	31
	75		<b>^ 735 158 637</b>	0.437	3.6	49	32
	90		<b>735 158 638</b>	0.597	4.3	57	37
	110		<b>735 158 639</b>	1.100	5.3	70	46
	160		<b>735 158 642</b>	3.538	7.7	100	62
	200		<b>735 158 644</b>	6.654	9.6	124	77
	225		<b>* 735 158 645</b>	9.533	10.8	140	88

A

**45° Elbow, PN 16, PVDF-HP**



**Model:**

- Material: PVDF

d (mm)	PN (bar)	FM	Part No.	SP	weight (kg)	e (mm)	L (mm)	L1 (mm)	R (mm)
250	16		<b>735 158 646</b>	1	3.669	11.9	120	47	232
315	16		<b>* 735 158 648</b>	1	7.162	15.0	147	47	297

A

**45° Elbow, PN 10, PVDF-HP**



d (mm)	FM	Part No.	weight (lb)	e (mm)	L (mm)	L1 (mm)
90	BCF, IR	<b>^ 735 158 538</b>	0.430	2.8	57	37
110	BCF, IR	<b>^ 735 158 539</b>	0.767	3.4	70	46
160	IR	<b>735 158 542</b>	2.174	4.9	100	62
200	IR	<b>735 158 544</b>	4.251	6.2	124	77
225	IR	<b>* 735 158 545</b>	6.023	6.9	140	88

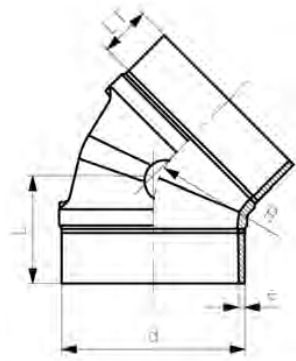


A

**45° Elbow, PN 10, PVDF-HP**



d (mm)	FM	Part No.	weight (lb)	e (mm)	L (mm)	L1 (mm)	R (mm)
250	IR	<b>* 735 158 546</b>	5.296	7.7	120	47	232
315	IR	<b>* 735 158 548</b>	10.853	9.7	147	47	297





A

**Tee, PN 16, PVDF-HP**



	FM	d	Part No.	weight	e	L	L1
		(mm)		(lb)	(mm)	(mm)	(mm)
BCF, IR	20	<b>735 208 631</b>		0.051	1.9	38	25
BCF, IR	25	<b>735 208 632</b>		0.071	1.9	42	27
BCF, IR	32	<b>735 208 633</b>		0.123	2.4	46	27
BCF, IR	40	<b>^ 735 208 634</b>		0.183	2.4	51	28
BCF, IR	50	<b>735 208 635</b>		0.344	3.0	58	28
BCF, IR	63	<b>735 208 636</b>		0.595	3.0	66	28
BCF, IR	75	<b>^ 735 208 637</b>		0.741	3.6	75	32
BCF, IR	90	<b>735 208 638</b>		1.294	4.3	90	39
BCF, IR	110	<b>735 208 639</b>		2.324	5.3	110	48
	160	<b>735 208 642</b>		7.513	7.7	160	71
	200	<b>735 208 644</b>		15.091	9.6	200	80
	225	<b>* 735 208 645</b>		21.506	10.8	220	86
	IR 250	<b>* 735 208 646</b>		23.861	11.9	223	70
	IR 315	<b>735 208 648</b>		47.227	15.0	274	74

A

**Tee, PN 10, PVDF-HP**



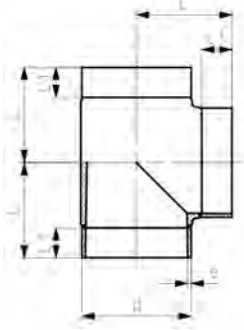
	d	FM	Part No.	weight	e	L	L1
	(mm)			(lb)	(mm)	(mm)	(mm)
90	BCF, IR	<b>^ 735 208 538</b>		0.955	2.8	90	39
110	BCF, IR	<b>^ 735 208 539</b>		1.689	3.4	110	48
160	IR	<b>735 208 542</b>		4.960	4.9	160	71
200	IR	<b>735 208 544</b>		11.845	6.2	200	80
225	IR	<b>* 735 208 545</b>		16.028	6.9	220	86
250	IR	<b>^ 735 208 546</b>		15.298	7.7	223	70
315	IR	<b>^ 735 208 548</b>		30.605	9.7	274	74

A

**Tee, PN 10, PVDF-HP**



d (mm)	FM	Part No.	weight (lb)	e (mm)	L (mm)	L1 (mm)
355	IR	^ 735 208 549	47.492	10.9	311	100
400	IR	^ 735 208 550	64.027	12.3	332	100
450	IR	^ 735 208 551	85.709	13.8	357	100

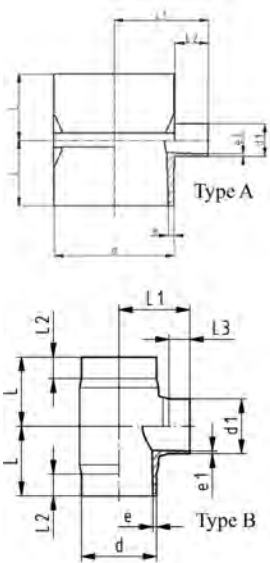


A

**Molded Reducing Tee, PN 16, PVDF-HP**

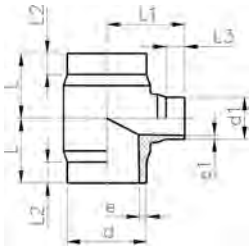


	d - d1 (mm)	FM	Part No.	weight (lb)	e (mm)	e1 (mm)	L (mm)	L1 (mm)	L2 (mm)	L3 (mm)
A	63 - 20	BCF, IR	^ 735 208 956	0.551	3.0	1.9	60	67	25	35
A	63 - 25	BCF, IR	^ 735 208 957	0.540	3.0	1.9	60	66	25	34
A	63 - 32	BCF, IR	^ 735 208 958	0.567	3.0	2.4	60	67	25	25
A	63 - 40	BCF, IR	^ 735 208 959	0.560	3.0	2.4	60	66	25	26
A	75 - 20	BCF, IR	^ 735 208 961	0.767	3.6	1.9	65	69	25	31
A	75 - 25	BCF, IR	^ 735 208 962	0.785	3.6	1.9	65	72	25	34
A	75 - 32	BCF, IR	^ 735 208 963	0.679	3.6	2.4	65	69	25	31
A	75 - 40	BCF, IR	^ 735 208 964	0.688	3.6	2.4	65	72	25	26
A	75 - 50	BCF, IR	^ 735 208 965	0.820	3.6	3.0	65	69	25	26
A	90 - 20	BCF, IR	^ 735 208 967	1.036	4.3	1.9	65	76	25	31
A	90 - 25	BCF, IR	^ 735 208 968	1.027	4.3	1.9	65	79	25	34
A	90 - 32	BCF, IR	^ 735 208 969	0.893	4.3	2.4	65	76	25	31
A	90 - 40	BCF, IR	^ 735 208 970	1.049	4.3	2.4	65	79	25	26
A	90 - 50	BCF, IR	^ 735 208 971	0.996	4.3	3.0	65	76	25	26
B	90 - 63	BCF, IR	^ 735 208 972	1.347	4.3	3.0	80	85	25	25
A	110 - 20	BCF, IR	^ 735 208 974	1.413	5.3	1.9	65	86	25	31
A	110 - 25	BCF, IR	^ 735 208 975	1.257	5.3	1.9	65	89	25	34
A	110 - 32	BCF, IR	^ 735 208 976	1.257	5.3	2.4	65	86	25	31
A	110 - 40	BCF, IR	^ 735 208 977	1.411	5.3	2.4	65	89	25	26
A	110 - 50	BCF, IR	^ 735 208 978	1.411	5.3	3.0	65	86	25	26
B	110 - 63	BCF, IR	^ 735 208 979	2.039	5.3	3.0	90	95	30	25
B	110 - 75	BCF, IR	^ 735 208 980	2.094	5.3	3.0	90	95	30	25
B	110 - 90	BCF, IR	^ 735 208 981	2.114	5.3	4.3	90	95	30	25
B	160 - 90	IR	^ 735 208 687	6.814	7.7	4.3	155	130	60	25
B	160 - 110	IR	^ 735 208 686	6.786	7.7	5.3	155	130	60	25
B	225 - 90	IR	^ 735 208 695	11.956	10.8	4.3	155	160	60	25
B	225 - 110	IR	^ 735 208 694	13.448	10.8	5.3	155	160	60	25



A

**Molded Reducing Tee, PN 10, PVDF-HP**

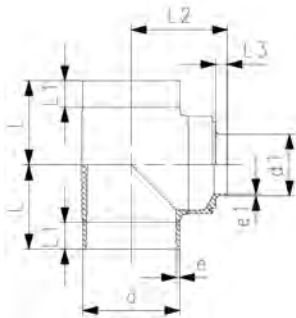


<b>d - d1</b> (mm)	<b>PN</b> (bar)	<b>SDR</b>	<b>FM</b>	<b>Part No.</b>	<b>weight</b> (lb)
160 - 90	10	33 - 21	IR	<b>^ 735 208 587</b>	5.359
160 - 110	10	33 - 21	IR	<b>^ 735 208 586</b>	5.498
225 - 90	10	33 - 21	IR	<b>^ 735 208 595</b>	9.919
225 - 110	10	33 - 21	IR	<b>^ 735 208 594</b>	10.110
225 - 160	10	33 - 33	IR	<b>^ 735 208 593</b>	9.815

<b>d - d1</b> (mm)	<b>e</b> (mm)	<b>e1</b> (mm)	<b>L</b> (mm)	<b>L1</b> (mm)	<b>L2</b> (mm)	<b>L3</b> (mm)
160 - 90	4.9	4.3	155	130	60	25
160 - 110	4.9	5.3	155	130	60	25
225 - 90	6.9	4.3	155	160	60	25
225 - 110	6.9	5.3	155	160	60	25
225 - 160	6.9	4.9	155	170	60	35

A

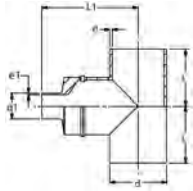
**Molded Reducing Tee, PN 10, PVDF-HP**



<b>d - d1</b> (mm)	<b>d fusion</b>	<b>d1 fusion</b>	<b>Part No.</b>	<b>weight</b> (lb)
355 - 225	IR450	IR315	<b>* 735 209 815</b>	51.718
355 - 315	IR450	IR450, IR315	<b>* 735 209 818</b>	49.924
400 - 225	IR450	IR315	<b>* 735 209 827</b>	70.374
400 - 315	IR450	IR450, IR315	<b>* 735 209 830</b>	68.178
450 - 225	IR450	IR315	<b>* 735 209 840</b>	94.876
450 - 315	IR450	IR450, IR315	<b>* 735 209 843</b>	92.354

<b>d - d1</b> (mm)	<b>e</b> (mm)	<b>e1</b> (mm)	<b>L</b> (mm)	<b>L1</b> (mm)	<b>L2</b> (mm)	<b>L3</b> (mm)
355 - 225	10.9	6.9	309	353	100	43
355 - 315	10.9	9.7	309	348	100	55
400 - 225	12.3	6.9	332	376	100	43
400 - 315	12.3	9.7	332	371	100	55
450 - 225	13.8	6.9	357	401	100	43
450 - 315	13.8	9.7	357	396	100	55

B

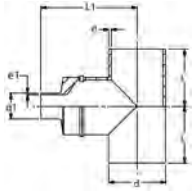


### Fabricated Reducing Tee (25-110mm) PN 16, PVDF-HP

IR Plus/BCF Plus Fusion  
Uses Molded Reducer

d (mm)	d1 (mm)	FM	Part No.	e (mm)	e1 (mm)	L (mm)	L1 (mm)
25	20	IR	* 735 992 450	1.9	1.9	42	87.0
32	20	IR	* 735 992 451	2.4	1.9	46	91.0
32	25	IR	* 735 992 452	2.4	2.4	46	91.0
40	20	IR	* 735 992 453	2.4	1.9	51	98.0
40	25	IR	* 735 992 454	2.4	1.9	51	99.0
40	32	IR	* 735 992 455	2.4	2.4	51	99.0
50	20	IR	* 735 992 456	3.0	1.9	58	103.0
50	25	IR	* 735 992 457	3.0	1.9	58	106.0
50	32	IR	* 735 992 458	3.0	2.4	58	106.0
50	40	IR	* 735 992 459	3.0	2.4	58	108.0
63	20	IR	* 735 992 460	3.0	1.9	66	111.0
63	25	IR	* 735 992 461	3.0	1.9	66	112.0
63	32	IR	* 735 992 462	3.0	2.4	66	114.0
63	40	IR	* 735 992 463	3.0	2.4	66	116.0
63	50	IR	* 735 992 464	3.0	3.0	66	116.0
75	20	IR	* 735 992 465	3.6	1.9	75	123.0
75	25	IR	* 735 992 466	3.6	1.9	75	124.0
75	32	IR	* 735 992 467	3.6	2.4	75	125.0
75	40	IR	* 735 992 468	3.6	2.4	75	127.0
75	50	IR	* 735 992 469	3.6	3.0	75	128.0
75	63	IR	* 735 992 470	3.6	3.0	75	125.0
90	20	IR	* 735 992 471	4.3	1.9	90	148.0
90	25	IR	* 735 992 472	4.3	1.9	90	149.0
90	32	IR	* 735 992 473	4.3	2.4	90	150.0
90	40	IR	* 735 992 474	4.3	2.4	90	152.0
90	50	IR	* 735 992 475	4.3	3.0	90	153.0
90	63	IR	* 735 992 476	4.3	3.0	90	150.0
90	75	IR	* 735 992 477	4.3	3.6	90	145.0
110	20	IR	* 735 992 478	5.3	1.9	110	168.0
110	25	IR	* 735 992 479	5.3	1.9	110	169.0
110	32	IR	* 735 992 480	5.3	2.4	110	170.0
110	40	IR	* 735 992 481	5.3	2.4	110	172.0
110	50	IR	* 735 992 482	5.3	3.0	110	173.0
110	63	IR	* 735 992 483	5.3	3.0	110	170.0
110	75	IR	* 735 992 484	5.3	3.6	110	165.0
110	90	IR	* 735 992 485	5.3	4.3	110	165.0

B

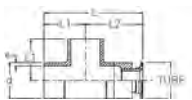


### Fabricated Reducing Tee (160-315mm) PN 10, PVDF-HP

For sizes 250 mm and above, the L1 dimension is +/- 6 mm.

d (mm)	d1 (mm)	FM	Part No.	e (mm)	e1 (mm)	L (mm)	L1 (mm)
160	63	IR	* 735 992 486	4.9	3.0	160	250
160	75	IR	* 735 992 487	4.9	3.6	160	225
160	90	IR	* 735 992 488	4.9	4.3	160	225
160	110	IR	* 735 992 489	4.9	5.3	160	225
200	63	IR	* 735 992 490	6.2	3.0	200	280
200	75	IR	* 735 992 491	6.2	3.6	200	275
200	90	IR	* 735 992 492	6.2	4.3	200	275
200	110	IR	* 735 992 493	6.2	5.3	200	275
200	160	IR	* 735 992 494	6.2	4.9	200	285
225	63	IR	* 735 992 495	6.9	3.0	220	310
225	75	IR	* 735 992 496	6.9	3.6	220	305
225	90	IR	* 735 992 497	6.9	4.3	220	305
225	110	IR	* 735 992 498	6.9	5.3	220	305
225	160	IR	* 735 992 499	6.9	4.9	220	315
225	200	IR	* 735 992 500	6.9	6.2	220	303
250	63	IR	* 735 992 501	7.7	3.0	223	313
250	75	IR	* 735 992 502	7.7	3.6	223	308
250	90	IR	* 735 992 503	7.7	4.3	223	309
250	110	IR	* 735 992 504	7.7	5.3	223	311
250	160	IR	* 735 992 505	7.7	4.9	223	310
250	200	IR	* 735 992 506	7.7	6.2	223	312
250	225	IR	* 735 992 507	7.7	6.9	223	294
315	63	IR	* 735 992 508	9.7	3.0	274	364
315	75	IR	* 735 992 509	9.7	3.6	274	359
315	90	IR	* 735 992 510	9.7	4.3	274	360
315	110	IR	* 735 992 511	9.7	5.3	274	362
315	160	IR	* 735 992 512	9.7	4.9	274	361
315	200	IR	* 735 992 513	9.7	6.2	274	363
315	225	IR	* 735 992 514	9.7	6.9	274	363
315	250	IR	* 735 992 515	9.7	7.7	274	367

B



### Analytical Sanitary Sensor, PN 10 PVDF-HP

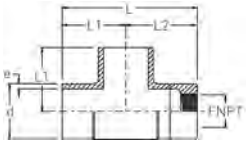
IR Plus/BCF Plus Fusion

d (mm)	Tube Size (inch)	FM	Part No.	e (mm)	L (mm)	L1 (mm)	L2 (mm)
50	¾	BCF, IR	* 735 991 820	3.0	150	58	92
50	1	BCF, IR	* 735 991 821	3.0	150	58	92
50	1 ½	BCF, IR	* 735 991 822	3.0	150	58	92
63	¾	BCF, IR	* 735 991 823	3.0	166	66	100
63	1	BCF, IR	* 735 991 824	3.0	166	66	100
63	1 ½	BCF, IR	* 735 991 825	3.0	166	66	100
75	¾	BCF, IR	* 735 991 826	3.6	180	75	105
75	1	BCF, IR	* 735 991 827	3.6	180	75	105
75	1 ½	BCF, IR	* 735 991 828	3.6	180	75	105
90	¾	BCF, IR	* 735 991 829	4.3	203	90	113
90	1	BCF, IR	* 735 991 830	4.3	203	90	113
90	1 ½	BCF, IR	* 735 991 831	4.3	203	90	113
110	¾	BCF, IR	* 735 991 832	5.3	234	110	124
110	1	BCF, IR	* 735 991 833	5.3	234	110	124
110	1 ½	BCF, IR	* 735 991 834	5.3	234	110	124

B

**Analytical Threaded Sensor, PN 16  
PVDF-HP**

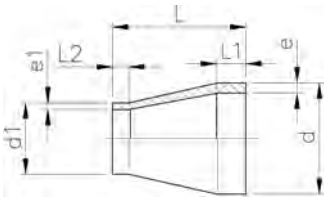
IR Plus/BCF Plus Fusion



d	FNPT	FM	Part No.	e	L	L1	L2
(mm)	(inch)			(mm)	(mm)	(mm)	(mm)
50	¼	BCF, IR	* 735 991 840	3.0	135	58	77
50	½	BCF, IR	* 735 991 841	3.0	135	58	77
50	¾	BCF, IR	* 735 991 842	3.0	135	58	77
50	1	BCF, IR	* 735 991 843	3.0	135	58	77
63	¼	BCF, IR	* 735 991 844	3.0	151	66	85
63	½	BCF, IR	* 735 991 845	3.0	151	66	85
63	¾	BCF, IR	* 735 991 846	3.0	151	66	85
63	1	BCF, IR	* 735 991 847	3.0	151	66	85
75	¼	BCF, IR	* 735 991 848	3.6	165	75	90
75	½	BCF, IR	* 735 991 849	3.6	165	75	90
75	¾	BCF, IR	* 735 991 850	3.6	165	75	90
75	1	BCF, IR	* 735 991 851	3.6	165	75	90
90	¼	BCF, IR	* 735 991 852	4.3	188	90	98
90	½	BCF, IR	* 735 991 853	4.3	188	90	98
90	¾	BCF, IR	* 735 991 854	4.3	188	90	98
90	1	BCF, IR	* 735 991 855	4.3	188	90	98
110	¼	BCF, IR	* 735 991 856	5.3	219	110	109
110	½	BCF, IR	* 735 991 857	5.3	219	110	109
110	¾	BCF, IR	* 735 991 858	5.3	219	110	109
110	1	BCF, IR	* 735 991 859	5.3	219	110	109

A

**Reducer, PN 16, PVDF-HP**



d - d1	FM	Part No.	weight	e1	e	L	L1	L2
(mm)			(lb)	(mm)	(mm)	(mm)	(mm)	(mm)
25 - 20	BCF, IR	735 908 600	0.026	1.9	1.9	50	22	22
32 - 20	BCF, IR	735 908 602	0.037	1.9	2.4	50	22	22
32 - 25	BCF, IR	735 908 601	0.040	1.9	2.4	50	22	22
40 - 20	BCF, IR	735 908 605	0.053	1.9	2.4	58	22	24
40 - 25	BCF, IR	735 908 604	0.055	1.9	2.4	55	22	24
40 - 32	BCF, IR	735 908 603	0.064	2.4	2.4	55	22	24
50 - 25	BCF, IR	735 908 608	0.119	1.9	3.0	60	22	25
50 - 32	BCF, IR	735 908 607	0.130	2.4	3.0	60	22	25
50 - 40	BCF, IR	735 908 606	0.132	2.4	3.0	60	22	25
63 - 32	BCF, IR	735 908 611	0.172	2.4	3.0	65	22	25
63 - 40	BCF, IR	735 908 610	0.181	2.4	3.0	65	22	25
63 - 50	BCF, IR	735 908 609	0.198	3.0	3.0	65	22	25
75 - 40	BCF, IR	735 908 614	0.240	2.4	3.6	68	24	25
75 - 50	BCF, IR	735 908 613	0.276	3.0	3.6	65	24	25
75 - 63	BCF, IR	735 908 612	0.282	3.0	3.6	65	24	25
90 - 63	BCF, IR	735 908 616	0.362	3.0	4.3	75	25	30
90 - 75	BCF, IR	735 908 615	0.412	3.6	4.3	75	25	35
110 - 63	BCF, IR	735 908 619	0.664	3.0	5.3	90	30	30
110 - 75	BCF, IR	735 908 618	0.639	3.6	5.3	90	30	35
110 - 90	BCF, IR	735 908 617	0.708	4.3	5.3	90	30	35

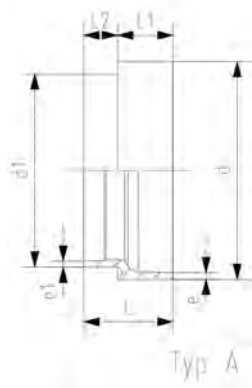
A



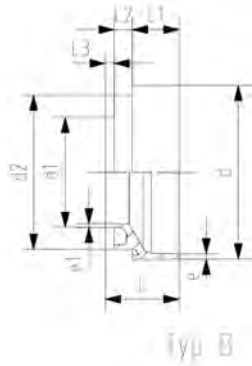
Typ A



Typ B



Typ A



Typ B

### Reducer, PN 16, PVDF-HP

**Model:**

- Material: PVDF

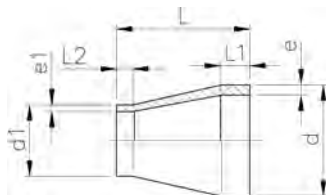
**Note:**

For Type B, must clamp spigot d2 in IR machine when welding spigot d1.

d - d1 (mm)	PN (bar)	fusion	d - d1 (mm)	FM	Part No.
250 - 160	16	IR	IR	IR	<b>735 908 628</b>
250 - 225	16	IR	IR	IR	<b>* 735 908 629</b>
315 - 160	16	IR	IR	IR	<b>735 908 632</b>
315 - 225	16	IR	IR	IR	<b>* 735 908 633</b>

d - d1 (mm)	e (mm)	e1 (mm)	L (mm)	L1 (mm)	L2 (mm)	L3 (mm)	Type	d2 (mm)
250 - 160	11.9	7.7	100	42	33	10	B	225
250 - 225	11.9	10.8	90	42	33		A	
315 - 160	15.0	7.7	115	50	33	10	B	225
315 - 225	15.0	10.8	105	50	33		A	

A



### Reducer, PN 10, PVDF-HP

d - d1 (mm)	PN (bar)	SDR	FM	Part No.	weight (lb)	e (mm)	e1 (mm)	L (mm)	L1 (mm)	L2 (mm)
90 - 63	10	33 - 21	BCF, IR	<b>^ 735 908 511</b>	0.328	2.8	3.0	75	25	30
110 - 63	10	33 - 21	BCF, IR	<b>^ 735 908 513</b>	0.362	3.4	3.0	90	30	30
110 - 90	10	33 - 33	BCF, IR	<b>^ 735 908 515</b>	0.527	3.4	2.8	90	30	35
160 - 110	10	33 - 21	IR	<b>735 908 504</b>	1.382	4.9	5.3	120	40	40
200 - 160	10	33 - 33	IR	<b>^ 735 908 505</b>	2.275	6.2	4.9	145	50	40
225 - 110	10	33 - 21	IR	<b>* 735 908 506</b>	3.027	6.9	5.3	160	55	35
225 - 160	10	33 - 33	IR	<b>* 735 908 507</b>	2.974	6.9	4.9	160	55	40
225 - 200	10	33 - 33	IR	<b>^ 735 908 508</b>	3.252	6.9	6.2	160	55	50
250 - 225	10	33 - 33	IR	<b>^ 735 908 531</b>	4.883	7.7	6.9	182	60	55
315 - 225	10	33 - 33	IR	<b>^ 735 908 533</b>	8.620	9.7	6.9	231	80	55

A



Typ A



Typ B

**Reducer, PN 10, PVDF-HP**

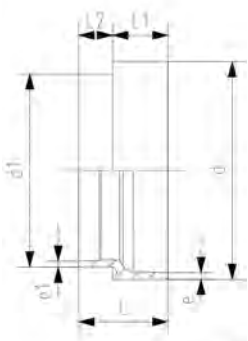
**Model:**

- Material: PVDF

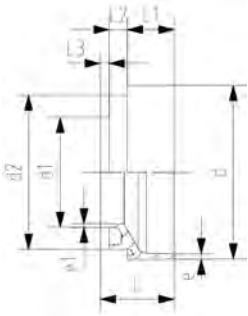
**Note:**

For Type B, must clamp spigot d2 in IR machine when welding spigot d1.

d - d1 (mm)	PN (bar)	SDR	FM	Part No.
250 - 160	10	33 - 33	IR	^ 735 908 522
250 - 160	10	33 - 21	IR	^ 735 908 542
250 - 225	10	33 - 33	IR	^ 735 908 524
250 - 225	10	33 - 21	IR	^ 735 908 544
315 - 160	10	33 - 33	IR	* 735 908 528
315 - 160	10	33 - 21	IR	* 735 908 548
315 - 225	10	33 - 33	IR	* 735 908 530
315 - 225	10	33 - 21	IR	* 735 908 550



Typ A



Typ B

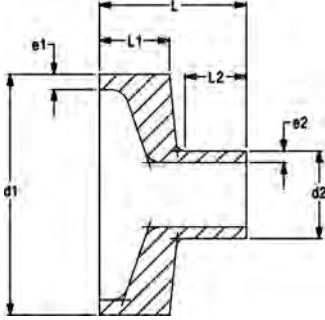
d - d1 (mm)	e (mm)	e1 (mm)	L (mm)	L1 (mm)	L2 (mm)	L3 (mm)	Type	d2 (mm)
250 - 160	7.7	4.9	100	42	33	10	B	225
250 - 160	7.7	7.7	100	42	33	10	B	225
250 - 225	7.7	6.9	90	42	33		A	
250 - 225	7.7	10.8	90	42	33		A	
315 - 160	9.7	4.9	115	50	33	10	B	225
315 - 160	9.7	7.7	115	50	33	10	B	225
315 - 225	9.7	6.9	105	50	33		A	
315 - 225	9.7	10.8	105	50	33		A	



B

**Flush Style Reducer (40-110mm), PN 16, PVDF-HP**

IR Plus Fusion

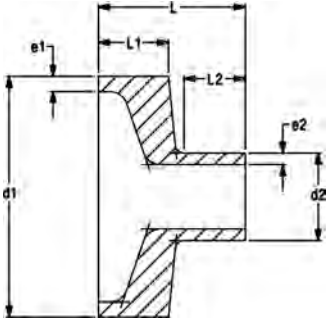


d1 (mm)	d2 (mm)	FM	Part No.	e1 (mm)	e2 (mm)	L (mm)	L1 (mm)	L2 (mm)
40	20	IR	* 735 909 604	2.4	1.9	52	24	25
40	25	IR	* 735 909 605	2.4	1.9	53	24	26
40	32	IR	* 735 909 606	2.4	2.4	53	23	26
50	20	IR	* 735 909 607	3.0	1.9	50	22	25
50	25	IR	* 735 909 608	3.0	1.9	53	24	26
50	32	IR	* 735 909 609	3.0	2.4	53	23	26
50	40	IR	* 735 909 610	3.0	2.4	55	23	28
63	20	IR	* 735 909 611	3.0	1.9	50	22	25
63	25	IR	* 735 909 612	3.0	1.9	51	22	26
63	32	IR	* 735 909 613	3.0	2.4	53	23	26
63	40	IR	* 735 909 614	3.0	2.4	55	23	28
63	50	IR	* 735 909 615	3.0	3.0	55	22	28
75	20	IR	* 735 909 616	3.6	1.9	53	22	25
75	25	IR	* 735 909 617	3.6	1.9	54	22	26
75	32	IR	* 735 909 618	3.6	2.4	55	22	26
75	40	IR	* 735 909 619	3.6	2.4	57	22	28
75	50	IR	* 735 909 620	3.6	3.0	58	22	28
75	63	IR	* 735 909 621	3.6	3.0	55	22	28
90	20	IR	* 735 909 622	4.3	1.9	63	32	25
90	25	IR	* 735 909 623	4.3	1.9	64	32	26
90	32	IR	* 735 909 624	4.3	2.4	65	32	26
90	40	IR	* 735 909 625	4.3	2.4	67	32	28
90	50	IR	* 735 909 626	4.3	3.0	68	32	28
90	63	IR	* 735 909 627	4.3	3.0	65	32	28
90	75	IR	* 735 909 628	4.3	3.6	60	32	23
110	20	IR	* 735 909 629	5.3	1.9	63	32	25
110	25	IR	* 735 909 630	5.3	1.9	64	32	26
110	32	IR	* 735 909 631	5.3	2.4	65	32	26
110	40	IR	* 735 909 632	5.3	2.4	67	32	28
110	50	IR	* 735 909 633	5.3	3.0	68	32	28
110	63	IR	* 735 909 634	5.3	3.0	65	32	28
110	75	IR	* 735 909 635	5.3	3.6	60	32	23
110	90	IR	* 735 909 636	5.3	4.3	60	31	23

B

**Flush Style Reducer (160-315mm), PN 10, PVDF-HP**

IR Plus Fusion



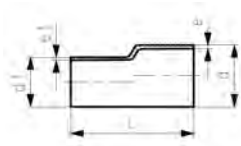
d1 (mm)	d2 (mm)	FM	Part No.	e1 (mm)	e2 (mm)	L (mm)	L1 (mm)	L2 (mm)
160	63	IR	* 735 909 656	4.9	3.0	95	62	28
160	75	IR	* 735 909 657	4.9	3.6	70	42	23
160	90	IR	* 735 909 658	4.9	4.3	70	41	23
160	110	IR	* 735 909 659	4.9	5.3	70	39	23
200	63	IR	* 735 909 662	6.2	3.0	85	52	28
200	75	IR	* 735 909 663	6.2	3.6	80	52	23
200	90	IR	* 735 909 664	6.2	4.3	80	51	23
200	110	IR	* 735 909 665	6.2	5.3	80	49	23
200	160	IR	* 735 909 668	6.2	4.9	90	45	33
225	63	IR	* 735 909 669	6.9	3.0	95	62	28
225	75	IR	* 735 909 670	6.9	3.6	90	62	23
225	90	IR	* 735 909 671	6.9	4.3	90	61	23
225	110	IR	* 735 909 672	6.9	5.3	90	59	23
225	160	IR	* 735 909 675	6.9	4.9	100	55	33
225	200	IR	* 735 909 676	6.9	6.2	88	41	33
250	63	IR	* 735 909 677	7.7	3.0	98	60	28
250	75	IR	* 735 909 678	7.7	3.6	93	60	23
250	90	IR	* 735 909 679	7.7	4.3	94	60	23
250	110	IR	* 735 909 680	7.7	5.3	96	60	23
250	160	IR	* 735 909 683	7.7	4.9	95	50	33
250	200	IR	* 735 909 684	7.7	6.2	97	50	33
250	225	IR	* 735 909 685	7.7	6.9	79	30	33
315	63	IR	* 735 909 696	9.7	3.0	98	45	28
315	75	IR	* 735 909 697	9.7	3.6	93	45	23
315	90	IR	* 735 909 698	9.7	4.3	94	45	23
315	110	IR	* 735 909 699	9.7	5.3	96	45	23
315	160	IR	* 735 909 702	9.7	4.9	95	45	33
315	200	IR	* 735 909 703	9.7	6.2	97	45	33
315	225	IR	* 735 909 704	9.7	6.9	97	45	33
315	250	IR	* 735 909 705	9.7	7.7	101	41	48

A

**Eccentric Reducer, PN 16, PVDF-HP**

Model:

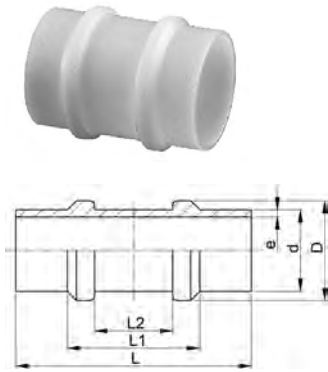
- Material: PVDF



d - d1 (mm)	FM	Part No.	SP	GP	weight (kg)	e (mm)	e1 (mm)	L (mm)
25 - 20	BCF, IR	735 938 737	1	30	0.020	1.9	1.9	80
32 - 20	BCF, IR	735 938 742	1	25	0.027	2.4	1.9	80
32 - 25	BCF, IR	735 938 741	1	25	0.030	2.4	1.9	80
40 - 20	BCF, IR	735 938 748	1	15	0.051	2.4	1.9	100
40 - 25	BCF, IR	735 938 747	1	15	0.043	2.4	1.9	100
40 - 32	BCF, IR	735 938 746	1	20	0.050	2.4	2.4	100
50 - 32	BCF, IR	735 938 753	1	20	0.068	3.0	2.4	100
50 - 40	BCF, IR	735 938 752	1	15	0.074	3.0	2.4	100
63 - 32	BCF, IR	735 938 760	1	15	0.105	3.0	2.4	100
63 - 40	BCF, IR	735 938 759	1	15	0.106	3.0	2.4	100
63 - 50	BCF, IR	735 938 758	1	15	0.097	3.0	3.0	100

A

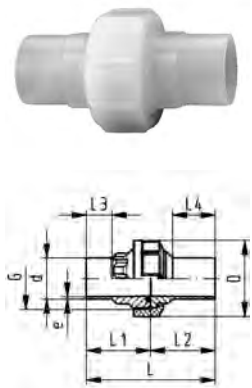
### Restraint Fitting, PN 16, PVDF-HP



d (mm)	FM	Part No.	weight (lb)	D (mm)	e (mm)	L (mm)	L1 (mm)	L2 (mm)
20	BCF, IR	<b>735 918 656</b>	0.060	28	1.9	100	53	32
25	BCF, IR	<b>735 918 657</b>	0.079	33	1.9	100	53	32
32	BCF, IR	<b>735 918 658</b>	0.119	40	2.4	100	53	32
40	BCF, IR	<b>735 918 659</b>	0.148	48	2.4	100	53	32
50	BCF, IR	<b>735 918 660</b>	0.276	58	3.0	100	53	32
63	BCF, IR	<b>735 918 661</b>	0.289	71	3.0	105	53	32
75	BCF, IR	<b>735 918 662</b>	0.556	87	3.6	125	70	40
90	BCF, IR	<b>735 918 663</b>	0.816	105	4.3	127	70	40
110	BCF, IR	<b>735 918 664</b>	1.149	127	5.3	127	70	40

A

### Union, FKM white, PN 16, PVDF-HP

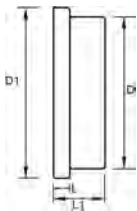


d (mm)	FM	Part No.	weight (lb)
20	BCF, IR	<b>735 528 626</b>	0.181
25	BCF, IR	<b>735 528 627</b>	0.271
32	BCF, IR	<b>735 528 628</b>	0.366
40	BCF, IR	<b>735 528 629</b>	0.580
50	BCF, IR	<b>735 528 630</b>	0.820
63	BCF, IR	<b>735 528 631</b>	1.021
75	BCF, IR	<b>735 528 637</b>	1.631
90	BCF, IR	<b>735 528 638</b>	1.759
110	BCF, IR	<b>735 528 639</b>	2.249

d (mm)	G (R/Rp BS Thread) (inch)	e (mm)	D (mm)	L (mm)	L1 (mm)	L2 (mm)	L3 (mm)	L4 (mm)
20	1	1.9	43	106	53	53	25	37
25	1 1/4	1.9	53	112	56	56	25	38
32	1 1/2	2.4	60	118	59	59	25	40
40	2	2.4	74	124	62	62	25	41
50	2 1/4	3.0	82	130	65	65	25	43
63	2 3/4	3.0	100	136	68	68	25	44
75	S 107.5 x 3.6	3.6	133	132	66	66	24	34
90	S 107.5 x 3.6	4.3	133	130	65	65	24	48
110	S 127.5 x 3.6	5.3	155	130	65	65	25	45

A

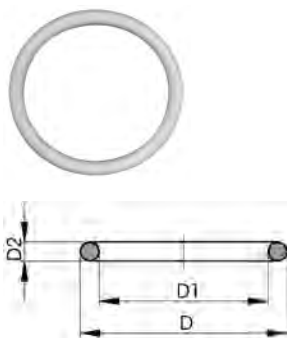
### Union Blankoff, PN 10, PVDF-HP Not for tapping



d (mm)	Part No.	weight (lb)	D (mm)	D1 (mm)	L (mm)	L1 (mm)
20	<b>* 155 482 101</b>	0.044	28	30	5	13
25	<b>* 155 482 102</b>	0.044	36	38	6	15
32	<b>* 155 482 103</b>	0.066	36	38	6	16
40	<b>* 155 482 104</b>	0.044	42	45	6	17
50	<b>* 155 482 105</b>	0.088	59	63	7	20
63	<b>* 155 482 106</b>	0.176	74	78	8	22

A

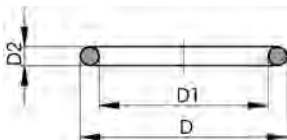
## O-Ring, FKM white, for SYGEF Plus Unions



d (mm)	FKM Part No.	D (mm)	D1 (mm)	D2 (mm)
20	<b>^ 749 411 005</b>	20.6	15.5	2.6
25	<b>^ 749 411 006</b>	27.3	20.2	3.5
32	<b>^ 749 411 120</b>	33.6	26.6	3.5
40	<b>^ 749 411 062</b>	41.6	34.5	3.5
50	<b>^ 749 411 172</b>	51.1	44.0	3.5
63	<b>^ 749 411 054</b>	63.0	55.0	4.0
75	<b>* 749 411 013</b>	79.9	69.2	5.3
90	<b>* 749 411 014</b>	92.6	81.9	5.3
110	<b>* 749 411 015</b>	117.0	101.0	5.3

A

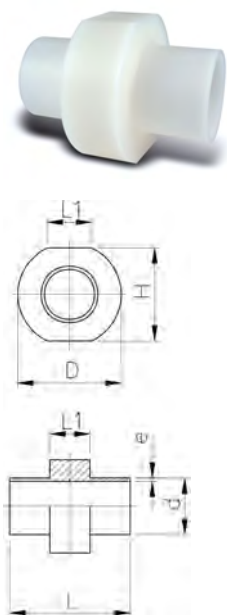
## O-Ring, Chemraz® White, for SYGEF Plus HP Unions



d (mm)	Part No.	D (mm)	D1 (mm)	D2 (mm)
20	<b>150 411 005</b>	20.6	15	2.6
25	<b>150 411 006</b>	27.3	20	3.5
32	<b>150 411 120</b>	33.6	26	3.5
40	<b>150 411 062</b>	41.6	34	3.5
50	<b>150 411 172</b>	51.1	44	3.5
63	<b>150 411 054</b>	63.0	55	4.0

B

## Instrument Installation Fitting, PN 16, PVDF-HP



d (mm)	FM	Part No.	e (mm)	L (mm)	D (mm)	H (mm)	L1 (mm)
20	BCF, IR	<b>* 735 918 606</b>	1.9	140	71	58	40
25	BCF, IR	<b>* 735 918 607</b>	1.9	140	75	63	40
32	BCF, IR	<b>* 735 918 608</b>	2.4	140	81	70	40
40	BCF, IR	<b>* 735 918 609</b>	2.4	140	88	78	40
50	BCF, IR	<b>* 735 918 610</b>	3.0	140	97	88	40
63	BCF, IR	<b>* 155 918 611</b>	3.0	140	109	101	40
75	BCF, IR	<b>* 155 918 612</b>	3.6	140	120	113	40
90	BCF, IR	<b>* 155 918 613</b>	4.3	140	134	128	40
110	BCF, IR	<b>* 155 918 614</b>	5.3	140	153	148	40

A

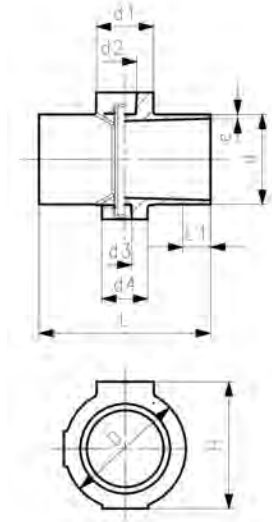
**Instrument Installation Fitting, PN 16, PVDF-HP**



**Note:**

Threads need to be milled. Smallest tap on d2 side is 3/8" threads. Smallest tap on d3 side is 1/4" threads. Maximum tap sizes given in table below.

d (mm)	FM	Part No.
63	BCF, IR	<b>735 918 811</b>
75	BCF, IR	<b>735 918 812</b>
90	BCF, IR	<b>735 918 813</b>
110	BCF, IR	<b>735 918 814</b>
160	IR	<b>735 918 817</b>
225	IR	<b>* 735 918 820</b>



d (mm)	D (mm)	e (mm)	d1 (mm)	d2 (mm)	d3 (mm)	d4 (mm)	H (mm)	L (mm)	L1 (mm)	Rp/NPT (inch)
63	85	3.0	40	17	10	32	89	120	25	¼ - ¾
75	96	3.6	40	17	10	40	101	130	25	¼ - ¾
90	110	4.3	40	17	10	40	116	130	25	¼ - ¾
110	127	5.3	40	17	10	40	136	130	25	¼ - ¾
160	189	7.7	63	17	10	50	191	155	40	¼ - 1
225	248	10.8	63	17	10	50	256	155	40	¼ - 1

A

**Instrument Installation Fitting, PN 10, PVDF-HP**



**Range of use:**

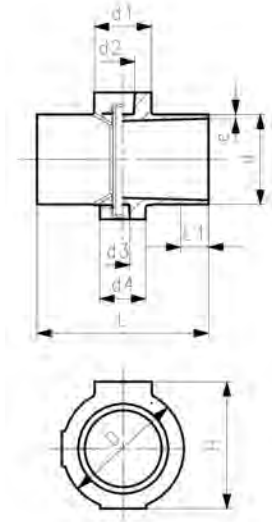
- Compatible with all signet sensors except flow sensors

**Note:**

Threads need to be milled. Smallest tap on d2 side is 3/8" threads. Smallest tap on d3 side is 1/4" threads. Maximum tap sizes given in table below.

d (mm)	PN (bar)	FM	Part No.	weight (kg)
160	10	IR	<b>735 918 717</b>	1.141
225	10	IR	<b>* 735 918 720</b>	1.845

d (mm)	D (mm)	e (mm)	d1 (mm)	d2 (mm)	d3 (mm)	d4 (mm)	H (mm)	L (mm)	L1 (mm)	Rp/NPT (inch)
160	189	4.9	63	17	10	50	191	155	40	¼ - 1
225	248	6.9	63	17	10	50	256	155	40	¼ - 1

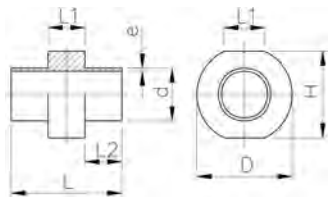


A

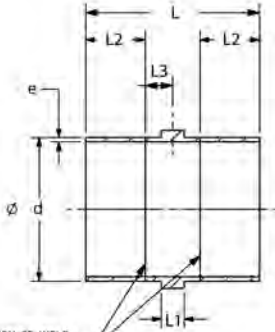
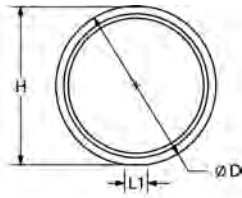
**Instrument Installation Fitting, PN 10, PVDF-HP**



d (mm)	FM	Part No.	D (mm)	e (mm)	H (mm)	L (mm)	L1 (mm)	L2 (mm)
200	IR	<b>* 735 918 569</b>	231	6.2	228	110	40	32



B

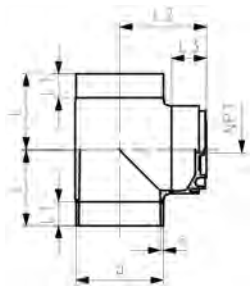


LOCATION OF WELD BEAD FROM CUSTOM MANUFACTURING

**Instrument Installation Fitting, PN 10, PVDF-HP**

d (mm)	Part No.	D (mm)	e (mm)	H (mm)	L (mm)	L1 (mm)	L2 (mm)	L3 (mm)
250	* 155 918 571	278	7.7	275	301	40	103	48
315	* 155 918 572	338	9.7	336	301	40	103	50

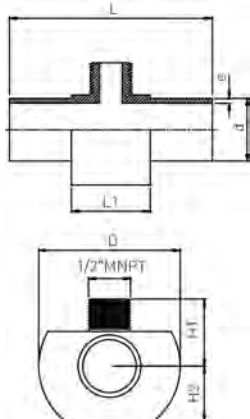
A



**Instrument Installation Fitting, PN 10, PVDF-HP**

d (mm)	NPT (inch)	FM	Part No.	e (mm)	L (mm)	L1 (mm)	L2 (mm)	L3 (mm)
355	½	IR	* 735 918 849	10.9	313	353	100	142
400	½	IR	* 735 918 850	12.3	332	376	100	142
450	½	IR	* 735 918 851	13.8	357	401	100	142

B



**1/2" MNPT Low Profile Adaptor, PN 10, PVDF-HP**

IR Plus/BCF Plus Fusion

d (mm)	FM	Part No.	e (mm)	L (mm)	D (mm)	H1 (mm)	H2 (mm)	L1 (mm)
20	BCF, IR	* 735 918 626	1.9	140	71	28	29	40
25	BCF, IR	* 735 918 627	1.9	140	75	30	31	40
32	BCF, IR	* 735 918 628	2.4	140	81	34	35	40
40	BCF, IR	* 735 918 629	2.4	140	88	38	39	40
50	BCF, IR	* 735 918 630	3.0	140	97	43	44	40
63	BCF, IR	* 735 918 631	3.0	140	109	49	50	40
75	BCF, IR	* 735 918 632	3.6	140	120	55	56	40
90	BCF, IR	* 735 918 633	4.3	140	134	63	64	40
110	BCF, IR	* 735 918 634	5.3	140	153	73	74	40

B

**3/4" (3A) Sanitary Adaptor, PN 10, PVDF-HP**

IR Plus/BCF Plus Fusion  
 3/4" size sanitary adapter port, i.e. 0.985" flange OD



d (mm)	FM	Part No.	e (mm)	L (mm)	D (mm)	H1 (mm)	H2 (mm)	L1 (mm)
20	BCF, IR	* 735 918 646	1.9	140	71	28	29	40
25	BCF, IR	* 735 918 647	1.9	140	75	30	31	40
32	BCF, IR	* 735 918 648	2.4	140	81	34	35	40
40	BCF, IR	* 735 918 649	2.4	140	88	38	39	40
50	BCF, IR	* 735 918 650	3.0	140	97	43	44	40
63	BCF, IR	* 735 918 651	3.0	140	109	49	50	40
75	BCF, IR	* 735 918 652	3.6	140	120	55	56	40
90	BCF, IR	* 735 918 653	4.3	140	134	63	64	40
110	BCF, IR	* 735 918 654	5.3	140	153	73	74	40

**Sanitary Adapter Installation Fitting, PN 16, PVDF-HP**

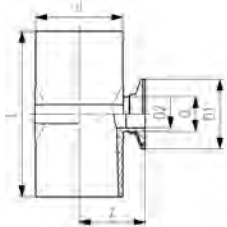


**Model:**

- Without chamfer, for complete drainability at sanitary connection
- d (mm) = main line
- D (mm) = connector line

**Range of use:**

- Pressure gauges
- Sampling valves
- Sanitary adapters



FM	d (mm)	Part No.	L (mm)	D (mm)	D2 (mm)	D1 (mm)	Z (mm)
*	BCF, IR	20 735 318 101	110	20	34.1	50.5	32.7
*	BCF, IR	25 735 318 202	110	25	34.1	50.5	35.2
*	BCF, IR	32 735 318 303	124	32	34.1	50.5	38.7
*	BCF, IR	40 735 318 204	124	25	19.9	50.5	42.7
*	BCF, IR	40 735 318 304	124	32	25.6	50.5	42.7
*	BCF, IR	50 735 318 205	124	25	19.9	50.5	47.7
*	BCF, IR	50 735 318 305	124	32	25.6	50.5	47.7
*	BCF, IR	50 735 318 505	124	50	42.2	64.0	47.7
	BCF, IR	63 735 318 206	120	25	19.9	50.5	54.2
	BCF, IR	63 735 318 306	120	32	25.6	50.5	54.2
*	BCF, IR	63 735 318 506	120	50	42.2	64.0	54.2
*	BCF, IR	63 735 318 606	138	63	55.1	77.5	54.2
	BCF, IR	75 735 318 207	130	25	19.9	50.5	60.2
	BCF, IR	75 735 318 307	130	32	25.6	50.5	60.2
	BCF, IR	75 735 318 507	130	50	42.2	64.0	60.2
*	BCF, IR	75 735 318 607	130	63	55.1	77.5	60.2
	BCF, IR	90 735 318 208	130	25	19.9	50.5	67.7
	BCF, IR	90 735 318 308	130	32	25.6	50.5	67.7
	BCF, IR	90 735 318 508	130	50	42.2	64.0	67.7
	BCF, IR	90 735 318 608	138	63	55.1	77.5	67.7
	BCF, IR	110 735 318 209	130	25	19.9	50.5	77.7
	BCF, IR	110 735 318 309	130	32	25.6	50.5	77.7
	BCF, IR	110 735 318 509	130	50	42.2	64.0	77.7
	BCF, IR	110 735 318 609	180	63	55.1	77.5	109.0



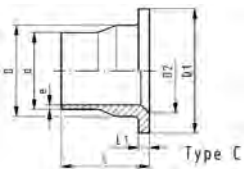
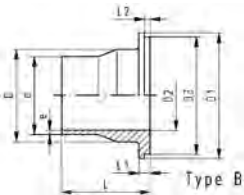
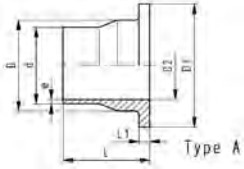
A

**Flange Adapter, PN 16, PVDF-HP**



**Note:**

Size 160 mm with 240 PSI / PN 16 pressure rating is approved for and should only be used for hot UPW. 40 mm fittings are for tool installation only.



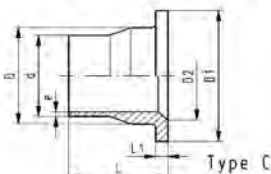
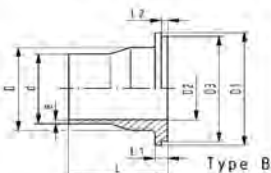
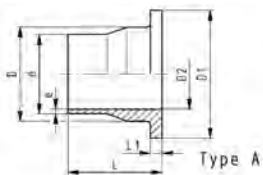
d (mm)	Part No.	weight (kg)	Type	L1 (mm)	D (mm)	D2 (mm)	e (mm)	D1 (mm)	L (mm)
20	<b>735 798 831</b>	0.029	A	6	26	15	1.9	45	54
25	<b>735 798 882</b>	0.043	A	7	32	20	1.9	54	56
32	<b>735 798 883</b>	0.063	A	7	40	26	2.4	63	58
40	<b>^ 735 798 884</b>	0.089	A	8	49	34	2.4	73	68
50	<b>735 798 885</b>	0.140	A	8	60	43	3.0	82	69
63	<b>735 798 836</b>	0.237	A	9	75	56	3.0	102	72
75	<b>^ 735 798 837</b>	0.361	A	10	89	66	3.6	122	80
90	<b>735 798 886</b>	0.435	A	12	105	78	4.3	133	81
110	<b>735 798 839</b>	0.626	C	13	125	100	5.3	158	81
160	<b>735 798 842</b>	1.208	C	17	175	151	7.7	212	93
200	<b>735 798 844</b>	2.139	C	22	232	207	9.6	268	102
225	<b>* 735 798 845</b>	2.210	C	22	235	207	10.8	268	102
250	<b>* 735 798 846</b>	3.658	C	25	285	249	11.9	320	122
315	<b>* 735 798 848</b>	5.028	C	28	335	300	15.0	370	124

A

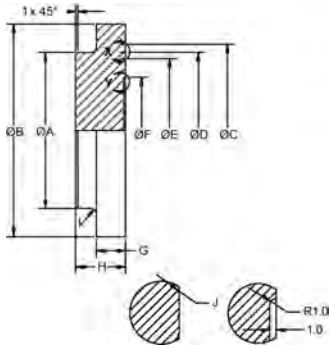
**Flange Adaptor, PN 10, ANSI Serrated, PVDF-HP**



d (mm)	FM	Part No.	D (mm)	D1 (mm)	D2 (mm)	D3 (mm)	e (mm)	L (mm)	L1 (mm)	L2 (mm)	Type
90	BCF, IR	<b>^ 735 798 888</b>	105	138	78	133	2.8	81	12	4	B
110	BCF, IR	<b>^ 735 798 889</b>	125	158	100		3.4	81	13		A
160	IR	<b>735 798 892</b>	175	212	151		4.9	93	17		C
200	IR	<b>^ 735 798 894</b>	232	268	207		6.2	102	22		C
225	IR	<b>* 735 798 895</b>	235	268	207		6.9	102	22		A
250	IR	<b>^ 735 798 596</b>	285	320	249		7.7	120	22		C
315	IR	<b>^ 735 798 598</b>	335	370	300		9.7	120	22		C



A

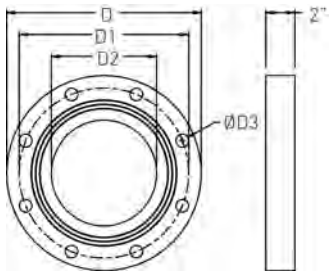


**Blind Flange, PN 16/PN 10, PVDF-HP**

Size	Part No.	weight (lb)
20	<b>735 991 362</b>	0.046
25	<b>735 991 363</b>	0.068
32	<b>735 991 364</b>	0.104
40	<b>^ 735 991 365</b>	0.187
50	<b>735 991 366</b>	0.276
63	<b>735 991 367</b>	0.430
75	<b>^ 735 991 368</b>	0.648
90	<b>735 991 369</b>	0.961
110	<b>735 991 370</b>	1.457
160	<b>^ 735 991 372</b>	3.543
200/225	<b>^ 735 991 373</b>	7.824
250	<b>* 735 991 374</b>	0.002
315	<b>* 735 991 375</b>	0.002

Size	A (mm)	B (mm)	C (mm)	D (mm)	E (mm)	F (mm)	G (mm)	H (mm)	Rad I (mm)	Rad J (mm)
20	25	43	28	22		16	6	17	1.0	0.4
25	32	54	35	29		20	7	17	1.5	0.4
32	40	63	43	36		26	7	17	1.5	0.4
40	49	73	54	57		33	8	21	2.0	0.4
50	60	79	64	56		41	8	21	2.0	0.4
63	75	99	83	75	69	51	9	21	2.5	0.4
75	89	119	99	91	83	61	10	21	2.5	0.4
90	105	133	115	106	97	74	11	23	3.0	0.4
110	125	158	138	128	118	90	12	24	3.0	0.5
160	175	200	191	181	171	131	17	30	4.0	1.0
200/225	232	268	250	240	230	164	20	30	4.0	1.0
250	285	320	290	280	270	230	22	30	1.0	0.5
315	335	370	349	339	329		22	34		1.0

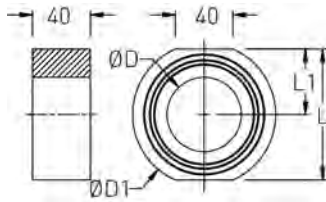
B



**Full-Face Flange Spacer, PN 16, PVDF-HP**

ANSI (inch)	Part No.	D (mm)	D1 (mm)	D2 (mm)	D3 (mm)	# holes
4	<b>* 735 991 340</b>	229	190	90	19	8
6	<b>* 735 991 341</b>	285	241	131	22	8
8	<b>* 735 991 342</b>	340	296	164	22	8
9	<b>* 735 991 343</b>	340	296	184	22	8
10	<b>* 735 991 344</b>	406	362	204	25	12
12	<b>* 735 991 345</b>	483	432	258	25	12

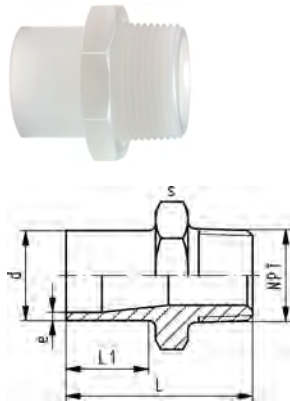
B



**Wafer Blank, PN 16, PVDF-HP**

d (mm)	Part No.	L (mm)	L1 (mm)	D (mm)	D1 (mm)
50	<b>735 991 860</b>	71	35	40	82
63	<b>735 991 861</b>	94	47	51	102
75	<b>735 991 862</b>	115	57	61	121
90	<b>735 991 863</b>	127	63	73	133
110	<b>735 991 864</b>	153	76	90	158
160	<b>735 991 865</b>	208	104	130	212
200	<b>735 991 866</b>	265	132	163	268
225	<b>735 991 867</b>	265	132	184	268
250	<b>735 991 868</b>	317	158	204	320
315	<b>735 991 869</b>	368	184	257	370

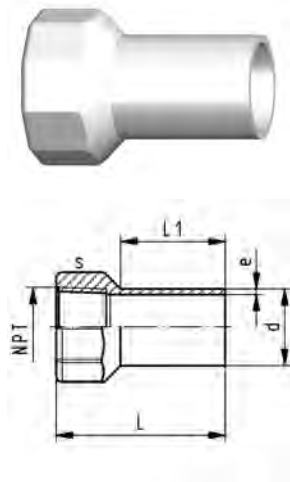
A



**Male NPT Adaptor, PN 16, PVDF-HP**

d (mm)	NPT (inch)	FM	Part No.	e (mm)	L (mm)	L1 (mm)	s (mm)
20	½	BCF, IR	<b>735 914 306</b>	1.9	53	28	32
25	¾	BCF, IR	<b>735 914 307</b>	1.9	55	28	36
32	1	BCF, IR	<b>735 914 308</b>	2.4	57	28	46
40	1 ¼	BCF, IR	<b>735 914 309</b>	2.4	60	28	55
50	1 ½	BCF, IR	<b>735 914 310</b>	3.0	63	28	65
63	2	BCF, IR	<b>735 914 311</b>	3.0	69	29	75

A



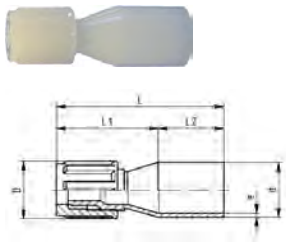
**Female NPT Adaptor, PN 16, PVDF-HP**

**Model:**

- With butt fusion spigot and NPT taper female thread
- Avoid stress when installing and large changes in temperature
- Connection to plastic thread only
- Do not apply solvent-based or other sealing compounds which could damage PVDF

d (mm)	NPT (inch)	FM	Part No.	weight (kg)	e (mm)	L (mm)	s (mm)	L1 (mm)
20	¾	BCF, IR	<b>735 914 785</b>	0.029	1.9	54	32	30
20	½	BCF, IR	<b>735 914 786</b>	0.027	1.9	54	32	30
25	¾	BCF, IR	<b>735 914 787</b>	0.033	1.9	58	38	30
32	1	BCF, IR	<b>735 914 788</b>	0.066	2.4	63	48	30
40	1 ¼	BCF, IR	<b>735 914 789</b>	0.085	2.4	67	58	30
50	1 ½	BCF, IR	<b>735 914 790</b>	0.108	3.0	67	65	30
*	2	BCF, IR	<b>735 914 791</b>	0.190	3.0	73	80	30

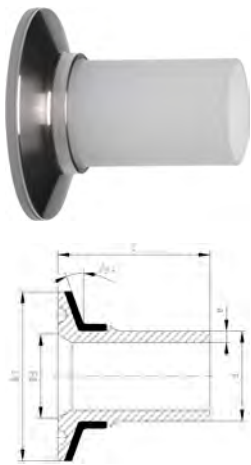
B



**Flare Tube Adaptor, PN 10, PVDF-HP**

d (mm)	tube size (inch)	FM	Part No.	e (mm)	L (mm)	L1 (mm)	L2 (mm)	D (mm)
20	¾	BCF, IR	* 735 598 430	1.9	75	45	30	21
20	¾	BCF, IR	* 735 598 431	1.9	76	46	30	23
20	½	BCF, IR	* 735 598 432	1.9	77	47	30	26
20	¾	BCF, IR	* 735 598 433	1.9	78	48	30	34
25	¾	BCF, IR	* 735 598 435	1.9	75	45	30	21
25	¾	BCF, IR	* 735 598 436	1.9	76	46	30	23
25	½	BCF, IR	* 735 598 437	1.9	77	47	30	26
25	¾	BCF, IR	* 735 598 438	1.9	78	48	30	34
25	1	BCF, IR	* 735 598 439	1.9	87	57	30	46
32	½	BCF, IR	* 735 598 442	2.4	77	47	30	26
32	¾	BCF, IR	* 735 598 443	2.4	78	48	30	34
32	1	BCF, IR	* 735 598 444	2.4	87	57	30	46

A

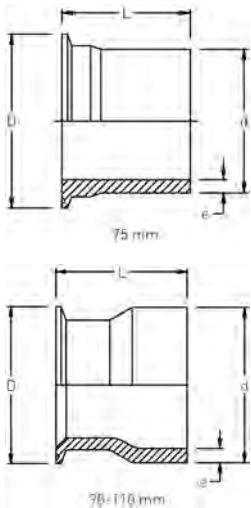


**Sanitary Adaptor, PN 16, ASME BPE, PVDF-HP**

Supplied with stainless steel backing ring

d (mm)	Size (inch)	FM	Part No.	e (mm)	D1 (mm)	D3 (mm)	L (mm)
20	¾	BCF, IR	735 598 357	1.9	25	16.20	49
25	1	BCF, IR	735 598 359	1.9	51	22.40	55
32	1 ½	BCF, IR	735 598 362	2.4	51	34.90	57
40	1 ½	BCF, IR	735 598 365	2.4	51	35.50	57
50	2	BCF, IR	735 598 367	3.0	64	47.70	68
63	2 ½	BCF, IR	735 598 369	3.0	78	59.90	71

B

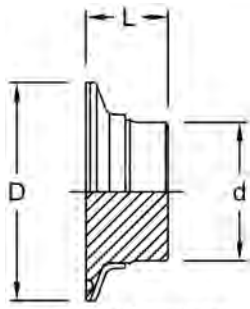


**Large Sanitary Adaptor, PN 6, PVDF-HP**

Does not use a Sanitary Backing Ring

d (mm)	Tube (3A) (inch)	FM	Part No.	weight (lb)	e (mm)	D (mm)	L (mm)
75	3	BCF, IR	* 735 598 370	0.057	3.6	91	67
90	3	BCF, IR	* 735 598 371	0.472	4.3	91	76
110	4	BCF, IR	* 735 598 372	0.683	5.3	119	76

B

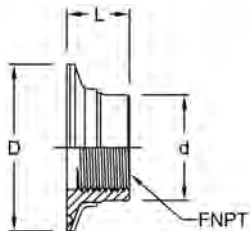


3/4", 3" and 4" do not include SS backing rings

**Sanitary Blank, PN 16/PN 6, PVDF-HP**

Tube (3A) (inch)	PN (bar)	Part No.	D (mm)	d (mm)	L (mm)
3/4	16	* 735 992 390	25	20	13
1 & 1 1/2	16	* 735 992 391	51	32	19
2	16	* 735 992 392	64	50	19
2 1/2	16	* 735 992 393	78	63	19
3	6	* 735 992 394	91	75	19
4	6	* 735 992 395	117	103	25

B



3/2", 3" and 4" do not include SS backing rings

**Sanitary Instrument Adaptor, PN 16/PN 6, PVDF-HP**

Tube (3A) (inch)	FNPT (inch)	PN	Part No.	D (mm)	d (mm)	L (mm)
3/4	1/4	16	* 735 992 400	25	20	13
1	1/4	16	* 735 992 401	51	40	19
1	3/8	16	* 735 992 402	51	40	19
1 1/2	1/4	16	* 735 992 403	51	40	19
1 1/2	1/2	16	* 735 992 404	51	40	19
1 1/2	3/4	16	* 735 992 405	51	40	19
2	1/4	16	* 735 992 406	64	50	19
2	1/2	16	* 735 992 407	64	50	19
2	3/4	16	* 735 992 408	64	50	19
2	1	16	* 735 992 409	64	50	19
2 1/2	1/4	16	* 735 992 410	78	63	19
2 1/2	1/2	16	* 735 992 411	78	63	19
2 1/2	3/4	16	* 735 992 412	78	63	19
2 1/2	1	16	* 735 992 413	78	63	19
3	1/4	6	* 735 992 414	91	75	19
3	1/2	6	* 735 992 415	91	75	19
3	3/4	6	* 735 992 416	91	75	19
3	1	6	* 735 992 417	91	75	19
4	1/4	6	* 735 992 418	117	103	25
4	1/2	6	* 735 992 419	117	103	25
4	3/4	6	* 735 992 420	117	103	25
4	1	6	* 735 992 421	117	103	25

B

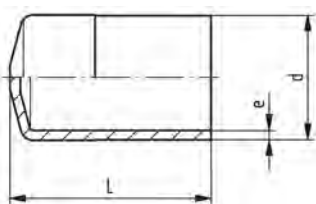


**Hose Adaptor, PN 16, PVDF-HP**

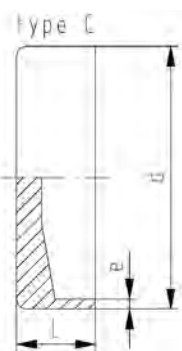
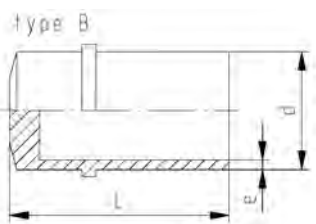
d - d1 (mm)	FM	Part No.	e (mm)	L (mm)	L1 (mm)
20 - 20	BCF, IR	* 735 968 731	1.9	64	27
25 - 25	BCF, IR	* 735 968 732	1.9	75	36
32 - 32	BCF, IR	* 735 968 733	2.4	82	36
40 - 40	BCF, IR	* 735 968 734	2.4	84	42
50 - 50	BCF, IR	* 735 968 735	3.0	90	48
63 - 60	BCF, IR	* 735 968 736	3.0	100	50

A

Cap, PN 16, PVDF-HP



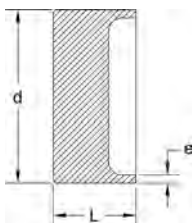
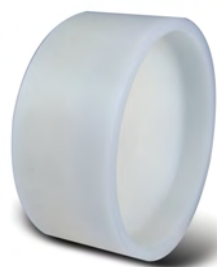
Type A



d (mm)	FM	PN (bar)	Part No.	weight (lb)	L (mm)	Type	e (mm)
20	BCF, IR	16	<b>735 968 106</b>	0.037	47	A	1.9
25	BCF, IR	16	<b>735 968 107</b>	0.026	47	A	1.9
32	BCF, IR	16	<b>735 968 108</b>	0.075	52	A	2.4
40	BCF, IR	16	<b>735 991 654</b>	0.150	59	B	2.4
50	BCF, IR	16	<b>735 991 655</b>	0.229	64	B	3.0
63	BCF, IR	16	<b>735 991 656</b>	0.364	69	B	3.0

B

Flush End Cap (Machined), PN 16/PN 10, PVDF-HP



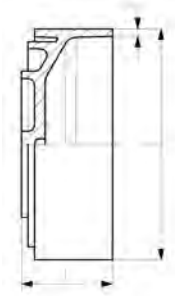
d (mm)	FM	PN	Part No.	e (mm)	L (mm)
20	IR	16	<b>*735 992 680</b>	1.9	30
25	IR	16	<b>*735 992 681</b>	1.9	30
32	IR	16	<b>*735 992 682</b>	2.4	30
40	IR	16	<b>*735 992 683</b>	2.4	30
50	IR	16	<b>*735 992 684</b>	3.0	30
63	IR	16	<b>*735 992 685</b>	3.0	30
75	IR	16	<b>*735 992 686</b>	3.6	30
90	IR	16	<b>*735 992 687</b>	4.3	36
110	IR	16	<b>*735 992 688</b>	5.3	38
160	IR	10	<b>*735 992 690</b>	4.9	42
200	IR	10	<b>*735 992 691</b>	6.2	45
225	IR	10	<b>*735 992 692</b>	6.9	50

A

**Cap, PN 10, PVDF-HP**



<b>d</b> (mm)	<b>FM</b>	<b>Part No.</b>	<b>e</b> (mm)	<b>L</b> (mm)
250	IR	<b>* 735 968 546</b>	7.7	114
315	IR	<b>* 735 968 548</b>	9.7	130
355	IR	<b>* 735 968 549</b>	10.9	150
400	IR	<b>* 735 968 550</b>	12.3	150
450	IR	<b>* 735 968 551</b>	13.8	150

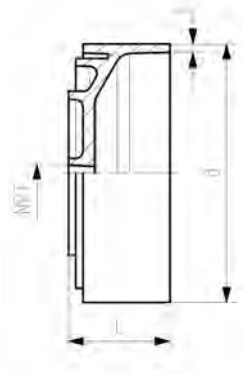


A

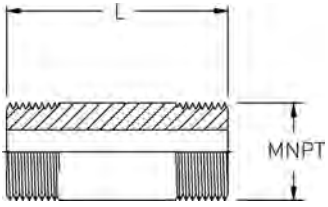
**Cap, female thread NPT, PN 10, PVDF-HP**



<b>d</b> (mm)	<b>NPT</b> (inch)	<b>FM</b>	<b>Part No.</b>	<b>e</b> (mm)	<b>L</b> (mm)
250	½	IR	<b>* 735 968 625</b>	7.7	114
315	½	IR	<b>* 735 968 635</b>	9.7	130



B



**Nipple, PN 10, PVDF-HP**

Male NPT (inch)	L (inch)	Part No.
1/2	2	* 735 992 350
1/2	3	* 735 992 351
1/2	4	* 735 992 352
3/4	2	* 735 992 353
3/4	3	* 735 992 354
3/4	4	* 735 992 355
1	2	* 735 992 356
1	3	* 735 992 357
1	4	* 735 992 358
1 1/4	3	* 735 992 359
1 1/4	4	* 735 992 360
1 1/2	3	* 735 992 361
1 1/2	4	* 735 992 362
2	3	* 735 992 363
2	4	* 735 992 364



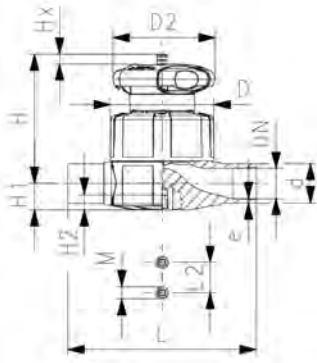
# Manual Valves

A



**Type 515 Diaphragm Valve SYGEF Plus PVDF**  
Butt fusion spigots metric

d (mm)	PTFE/EPDM Part No.
20	181 515 132
25	181 515 133
32	181 515 134
40	181 515 135
50	181 515 136
63	181 515 137



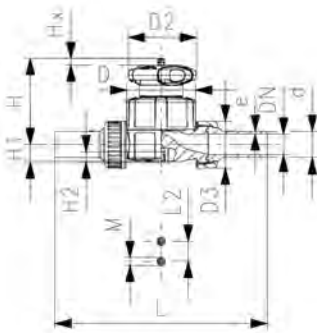
d (mm)	D (mm)	D2 (mm)	H (mm)	H1 (mm)	H2 (mm)	L (mm)	L2 (mm)	M	Lift = Hx (mm)	e (mm)	closest inch (inch)
20	65	65	73	14	12	124	25	M6	7	1.9	1/2
25	80	65	81	18	12	144	25	M6	10	1.9	3/4
32	88	87	107	22	12	155	25	M6	13	2.4	1
40	101	87	115	26	15	176	45	M8	15	2.4	1 1/4
50	117	135	148	32	15	193	45	M8	19	3.0	1 1/2
63	144	135	166	39	15	223	45	M8	25	3.0	2

A



**Type 514 Diaphragm Valve SYGEF Plus PVDF**  
Butt fusion spigots metric

d (mm)	PTFE/EPDM Part No.	PTFE/FKM Part No.	weight (lb)
20	181 514 132	* 181 514 152	0.880
25	181 514 133	* 181 514 153	1.316
32	181 514 134	* 181 514 154	2.449
40	181 514 135	* 181 514 155	2.835
50	181 514 136	* 181 514 156	6.590
63	181 514 137	* 181 514 157	6.975

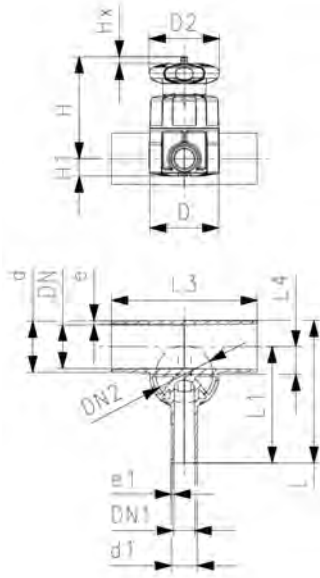


d (mm)	D (mm)	D2 (mm)	D3 (mm)	L (mm)	L2 (mm)	H (mm)	H1 (mm)	H2 (mm)	M	Lift = Hx (mm)	e (mm)	closest inch (inch)
20	65	65	43	196	25	73	14	12	M6	7	1.9	1/2
25	80	65	53	221	25	81	18	12	M6	10	1.9	3/4
32	88	87	60	234	25	107	22	12	M6	13	2.4	1
40	101	87	74	260	45	115	26	15	M8	15	2.4	1 1/4
50	117	135	82	284	45	148	32	15	M8	19	3.0	1 1/2
63	144	135	100	321	45	166	39	15	M8	25	3.0	2

A



**Type 519 Zero Static Diaphragm Valve  
SYGEF Plus PVDF  
Butt fusion spigots metric**

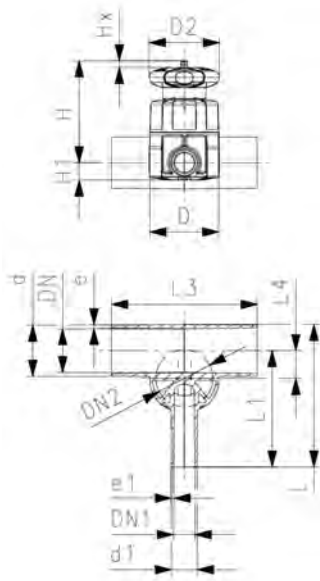


d (mm)	d1 (mm)	Valve Size d (mm)	PN (bar)	PTFE/EPDM Part No.	SP
20	20	20	10	^ 181 519 301	1
25	20	25	10	^ 181 519 303	1
25	25	25	10	^ 181 519 304	1
32	20	25	10	^ 181 519 307	1
32	25	25	10	^ 181 519 308	1
32	32	32	10	^ 181 519 309	1
40	20	32	10	^ 181 519 312	1
40	25	32	10	^ 181 519 313	1
40	32	32	10	^ 181 519 314	1
40	40	32	10	^ 181 519 315	1
50	20	25	10	^ 181 519 318	1
50	25	32	10	^ 181 519 319	1
50	32	32	10	^ 181 519 320	1
50	40	63	10	^ 181 519 321	1
50	50	63	10	^ 181 519 322	1
63	20	25	10	^ 181 519 325	1
63	25	32	10	^ 181 519 326	1
63	32	32	10	^ 181 519 327	1
63	40	63	10	^ 181 519 328	1
63	50	63	10	^ 181 519 329	1
63	63	63	10	^ 181 519 330	1
90	20	32	10	^ 181 519 341	1
90	25	32	10	^ 181 519 342	1
90	32	32	10	^ 181 519 343	1
90	50	63	10	^ 181 519 345	1
90	63	63	10	^ 181 519 346	1
110	20	32	10	^ 181 519 351	1
110	25	32	10	^ 181 519 352	1
110	32	32	10	^ 181 519 353	1
110	50	63	10	^ 181 519 355	1
110	63	63	10	^ 181 519 356	1

d (mm)	DN2 (mm)	DN1 (mm)	D2 (mm)	D (mm)	H (mm)	H1 (mm)	L (mm)	L1 (mm)	L3 (mm)	L4 (mm)	Lift = Hx (mm)	e (mm)	e1 (mm)
20	15	15	65	65	75	14.0	117	96	162	12	7	1.9	1.9
25	20	15	65	80	80	17.5	133	108	162	16	10	1.9	1.9
25	20	20	65	80	80	17.5	133	108	162	16	10	1.9	1.9
32	20	15	65	80	84	21.5	142	120	162	19	10	2.4	1.9
32	20	20	65	80	84	21.5	142	120	162	19	10	2.4	1.9
32	25	25	87	88	107	21.5	145	120	160	19	13	2.4	2.4
40	25	15	87	88	115	21.5	149	128	180	23	13	2.4	1.9
40	25	20	87	88	115	21.5	149	128	180	23	13	2.4	1.9
40	25	25	87	88	115	21.5	149	128	180	23	13	2.4	2.4
40	25	32	87	88	115	21.5	174	153	180	23	13	2.4	2.4
50	20	15	65	80	97	17.5	160	134	180	27	10	3.0	1.9
50	25	20	87	88	120	21.5	160	134	180	28	13	3.0	1.9
50	25	25	87	88	120	21.5	160	134	180	28	13	3.0	2.4
50	50	32	135	144	164	32.0	209	169	209	33	25	3.0	2.4
50	50	40	135	144	164	32.0	209	169	209	33	25	3.0	3.0
63	20	15	65	80	104	17.5	177	144	180	33	10	3.0	1.9
63	25	20	87	88	127	21.5	177	144	180	35	13	3.0	1.9
63	25	25	87	88	127	21.5	177	144	180	35	13	3.0	2.4
63	50	32	135	144	170	39.0	225	192	220	39	25	3.0	2.4
63	50	40	135	144	170	39.0	225	192	220	39	25	3.0	3.0
63	50	50	135	144	170	39.0	225	192	220	39	25	3.0	3.0
90	25	15	87	88	140	21.5	205	159	190	47	13	4.3	1.9
90	25	20	87	88	140	21.5	205	159	190	47	13	4.3	1.9

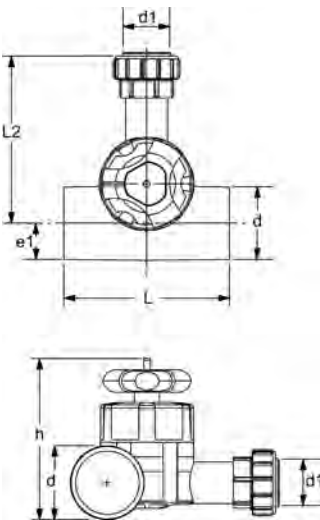
table continued on the next page

A



d (mm)	DN2 (mm)	DN1 (mm)	D2 (mm)	D (mm)	H (mm)	H1 (mm)	L (mm)	L1 (mm)	L3 (mm)	L4 (mm)	Lift = Hx (mm)	e (mm)	e1 (mm)
90	25	25	87	88	140	21.5	205	159	190	47	13	4.3	2.4
90	50	40	135	144	184	39.0	254	207	250	51	25	4.3	3.0
90	50	50	135	144	184	39.0	254	207	250	51	25	4.3	3.0
110	25	15	87	88	149	21.5	227	171	190	56	13	5.3	1.9
110	25	20	87	88	149	21.5	227	171	190	56	13	5.3	1.9
110	25	25	87	88	149	21.5	227	171	190	56	13	5.3	2.4
110	50	40	135	144	194	39.0	276	219	250	60	25	5.3	3.0
110	50	50	135	144	194	39.0	276	219	250	60	25	5.3	3.0

A

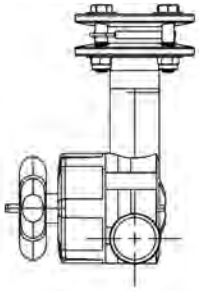


**Lateral Valve with Union, PN10 PVDF-HP 5 series**

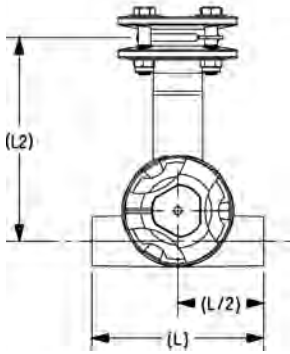
d (mm)	d1 (mm)	Part No.	SP weight (lb)	PN (bar)	L (mm)	L2 (mm)	e1 (mm)	h (mm)	psi at 73° F (psi)	
20	20	^ 735 994 525	1	1.146	10	162	118	10.0	85	150
25	20	^ 735 994 526	1	1.411	10	162	130	12.5	93	150
25	25	^ 735 994 527	1	1.455	10	162	132	12.5	93	150
32	20	* 735 994 529	1	1.543	10	162	142	16.0	100	150
32	25	^ 735 994 528	1	0.220	10	162	144	16.0	100	150
32	32	* 735 994 530	1	2.205	10	160	146	16.0	123	150
50	20	* 735 994 537	1	2.116	10	180	156	25.0	122	150
50	25	* 735 994 538	1	2.690	10	180	158	25.0	145	150
50	32	* 735 994 539	1	2.778	10	180	160	25.0	145	150
50	50	* 735 994 541	1	5.556	10	209	202	25.0	189	150
63	20	* 735 994 543	1	0.220	10	180	166	31.5	136	150
63	25	^ 735 994 544	1	2.910	10	180	168	31.5	159	150
63	32	* 735 994 545	1	2.998	10	180	170	31.5	159	150
63	50	* 735 994 547	1	0.002	10	220	225	31.5	202	150
63	63	* 735 994 548	1	0.002	10	220	227	31.5	202	150
90	20	* 735 994 558	1	3.836	10	190	181	45.0	185	150
90	25	* 735 994 559	1	3.880	10	190	183	45.0	185	150
90	32	* 735 994 560	1	3.616	10	190	185	45.0	185	150
90	50	* 735 994 562	1	8.245	10	250	240	45.0	229	150
90	63	* 735 994 563	1	0.002	10	250	242	45.0	229	150
110	20	* 735 994 566	1	0.002	10	190	193	55.0	204	150
110	25	* 735 994 567	1	4.542	10	190	195	55.0	204	150
110	32	* 735 994 568	1	0.002	10	190	197	55.0	204	150
110	50	* 735 994 570	1	9.039	10	250	252	55.0	249	150
110	63	* 735 994 571	1	0.002	10	250	254	55.0	249	150

A

**Lateral Valve, PN10 PVDF-HP 5 series Flanged**

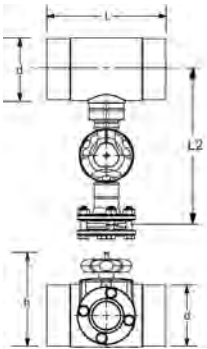


<b>d</b> (mm)	<b>d1</b> (mm)	<b>Part No.</b>	<b>SP</b>	<b>PN</b> (bar)	<b>L</b> (mm)	<b>L2</b> (mm)	<b>psi at 73° F</b> (psi)
63	63	<b>735 994 948</b>	1	10	220	261	150
90	63	<b>735 994 963</b>	1	10	250	276	150
110	63	<b>735 994 971</b>	1	10	250	288	150



A

**Lateral Tee Valve 160mm x 63mm**



<b>d</b> (mm)	<b>d2</b> (mm)	<b>Part No.</b>	<b>SP</b>	<b>PN</b> (bar)	<b>L</b> (mm)	<b>L2</b> (mm)	<b>h</b> (mm)
160	63	<b>155 994 900</b>	1	10	310	408	184

A

**Type 317 Diaphragm Valve**  
**SYGEF® Plus PVDF**  
**Flanged**

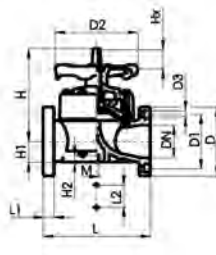


d (mm)	PTFE with EPDM supp. diaphragm Part No.	weight (lb)
75	^ 175 317 568	12.566
90	^ 175 317 054	24.377
110	^ 175 317 355	32.959

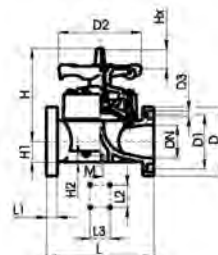
d (mm)	D (mm)	D1 (mm)	D2 (mm)	D3 (mm)	H (mm)	H1 (mm)	H2 (mm)	L (mm)	L1 (mm)	L2 (mm)	M	AL
75	185	140	152	18	201	46	15	290		70	M8	4
90	200	152	270	18	265	57	23	310	35	120	M12	8
110	225	191	270	18	302	68	23	350	35	120	M12	8



DN 15-65



DN 80-100



DN 150

B

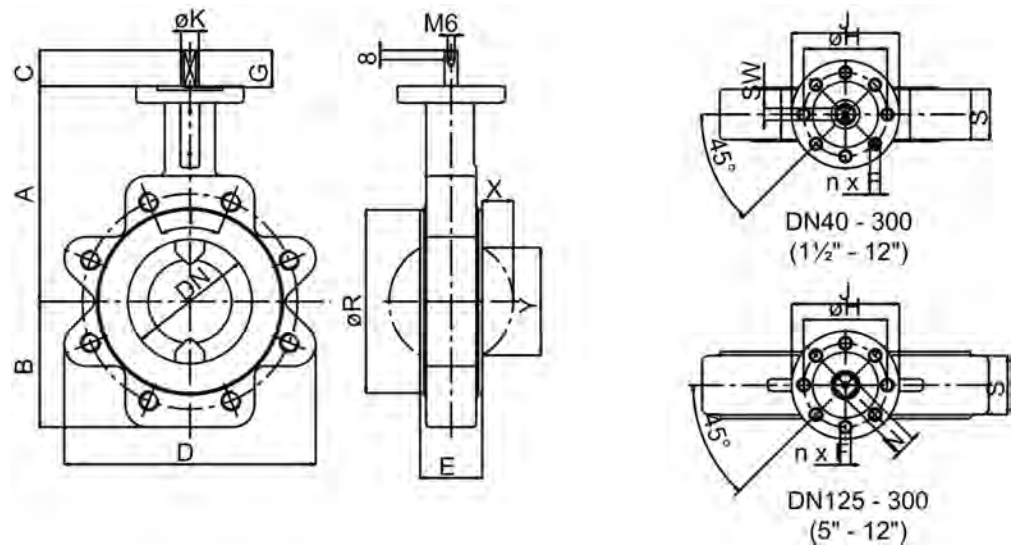


**Butterfly Valve - Type 365**

d (inch)	PN (bar)	Lever Op. Part No.	USD	Gear Op. Part No.	SP	weight (lb)
2	10	* 160 365 318	1,862.00			
3	10	* 160 365 320	2,174.00	* 160 365 500	1	17.637
4	10	* 160 365 321	2,298.00	* 160 365 501	1	23.589
6	10	* 160 365 323	3,291.00	* 160 365 503	1	34.833
8/9	10			* 160 365 504	1	63.934
10	10			* 160 365 505	1	77.162
12	10			* 160 365 506	1	123.238
14	10			* 160 365 507	1	144.623

d (inch)	Type	A (mm)	B (mm)	C (mm)	D (mm)	E (mm)	n x F	G (mm)	H (mm)	J (mm)	K (mm)	R (mm)	X (mm)	Y (mm)
2	F05	135	65	26	160	43	8 x dia 7	27	50	65	15	95	5	31
3	F07	160	93	29	188	46	8 x dia 9	30	70	90	15	132		69
4	F07	180	105	29	210	52	8 x dia 9	30	70	90	15	153	26	91
6	F07	210	140	46	269	56	8 x dia 9	47	70	90	20	209	48	143
8/9	F12	240	270	65	360	60	8 x dia 13	66	125	150	30	259	71	196
10	F12	275	205	65	435	68	8 x dia 13	66	125	150	30	309	91	243
12	F12	310	250	65	500	78	8 x dia 13	66	125	150	30	364	111	293
14	F12	330	255	25	534	78	8 x dia 28.6	32				412	126	304

d (inch)	N Square (mm)	SW (mm)	Weight (lb)
2		10	8
3		10	9
4		10	13
6	16/16		30
8/9	19/19		51
10	22/22		71
12	27/27		110
14	27/27		132

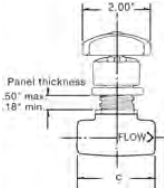


B

**Needle Valve - Type 522 Globe Body, Female NPT**



Size (inch)	Part No.	weight (kg)	c (mm)
¼	* 150 900 117	0.120	58
½	* 150 900 122	0.120	65

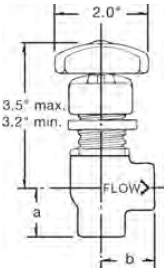


B

**Needle Valve - Type 522  
Angle Body, Female NPT**

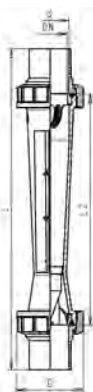


Size (inch)	Part No.	weight (lb)	a (mm)	b (mm)
¼	* 150 900 113	1.411	25	28
½	* 150 900 120	0.265	28	31



# Rotameters

C



**Rotameter 335 special version PVDF-HP**  
**Float in PTFE**  
**With fusion spigots IR/BCF**

Type	d (mm)	Scale range (l/h)	Scale range (gal/min)	Part No.	SP
SK 11	32	100 - 999	0.44 - 4.40	<b>* 198 335 160</b>	1
SK 20	50	300 - 2998	1.32 - 13.20	<b>* 198 335 161</b>	1
SK 21	50	600 - 5996	2.64 - 26.40	<b>* 198 335 162</b>	1
SK 30*	63	999 - 7995	4.40 - 35.20	<b>* 198 335 163</b>	1
SK 31	63	1499 - 14990	6.60 - 66.00	<b>* 198 335 164</b>	1
SK 40	75	1999 - 19987	8.80 - 88.00	<b>* 198 335 165</b>	1
SK 41*	75	2998 - 29004	13.20 - 127.70	<b>* 198 335 166</b>	1

D (mm)	L (mm)	L2 (mm)	G (inch)
60	453	335	1 ½
83	466	335	2 ¼
83	466	335	2 ¼
103	472	335	2 ¾
103	472	335	2 ¾
122	495	335	3 ½
122	495	335	3 ½



C

**Rotameter 807 special version PVDF-HP**  
**Float in PTFE**  
**With fusion spigots IR/BCF**



Type	d (mm)	DN (mm)	Scale range (l/h)	Scale range (gal/min)	Taper tube in Polysulfone, FKM O-Rings Part No.	weight (kg)
SK 70	32	25	68 - 204	0.3 - 0.9	* 198 807 209	0.383
SK 71	32	25	90 - 295	0.4 - 1.3	* 198 807 210	0.387
SK 73	32	25	136 - 795	0.6 - 3.5	* 198 807 202	0.401

Type	D (mm)	L (mm)	L2 (mm)	G (inch)
SK 70	60	318	200	1 ½
SK 71	60	318	200	1 ½
SK 73	60	318	200	1 ½

